

National Radiology Data Registry

NMD Physician Screening Report, December 2016

Facility ID:

999999



nrdr.acr.org



Breast Cancer Surveillance Consortium



Working together to advance
breast cancer research

The National Mammography Database (NMD) thanks the National Cancer Institute funded Breast Cancer Surveillance Consortium (BCSC) for providing benchmark data for comparison with measures for participating facilities.

Measure Definitions

Measure	Definition
All exams	Number of screening exams performed
Recall rate (ACRAD 5)	Number and percent of screening exams with a BI-RADS assessment category of 0, 4 or 5.
Biopsy recommended	Number and percent of screening mammograms with either a BI-RADS assessment category of 4 or 5, or a BIRADS assessment category of 0 associated with category 4 or 5 on a diagnostic mammogram.
Cancers and PPV2 (ACRad 6)	Number of screening exams and percent of screening exams where biopsy was recommended that result in a tissue diagnosis of cancer within 12 months.
Biopsy	Number and percent of screening exams with evidence of a biopsy
Biopsy - negative	Number and percent of biopsies where the patient had a histology result but did not have a tissue diagnosis of cancer within the next 12 months
Biopsy - positive	Number and percent of biopsies where the patient had a tissue diagnosis of cancer within the next 12 months
Cancers and CDR per 1000 (ACRad 3)	Number of screening mammograms with a BI-RADS assessment category of 0, 4 or 5, total and per 1000, that had a tissue diagnosis of cancer within 12 months.
Invasive CDR per 1000 (ACRad 4)	Number of screening mammograms with a BI-RADS assessment category of 0, 4 or 5, total and per 1000, that had a tissue diagnosis of invasive cancer within 12 months. (Invasive cancer rate x CDR)
DCIS	Number and percent of cancers that were DCIS
Invasive cancer	Number and percent of cancers that were invasive
Minimal cancer (ACRad 8)	Number and percent of cancers that were DCIS or had a tumor size of 10mm or less
Nodal status - negative (ACRad 7)	Number and percent of exams with nodal status indicated where status was negative
Nodal status - positive	Number and percent of exams with nodal status indicated where status was positive

To learn more about the Qualified Clinical Data Registry (QCDR) option and ACRad measures, please click below
<http://www.acr.org/Quality-Safety/National-Radiology-Data-Registry/Qualified-Clinical-Data-Registry>

Measure Definitions

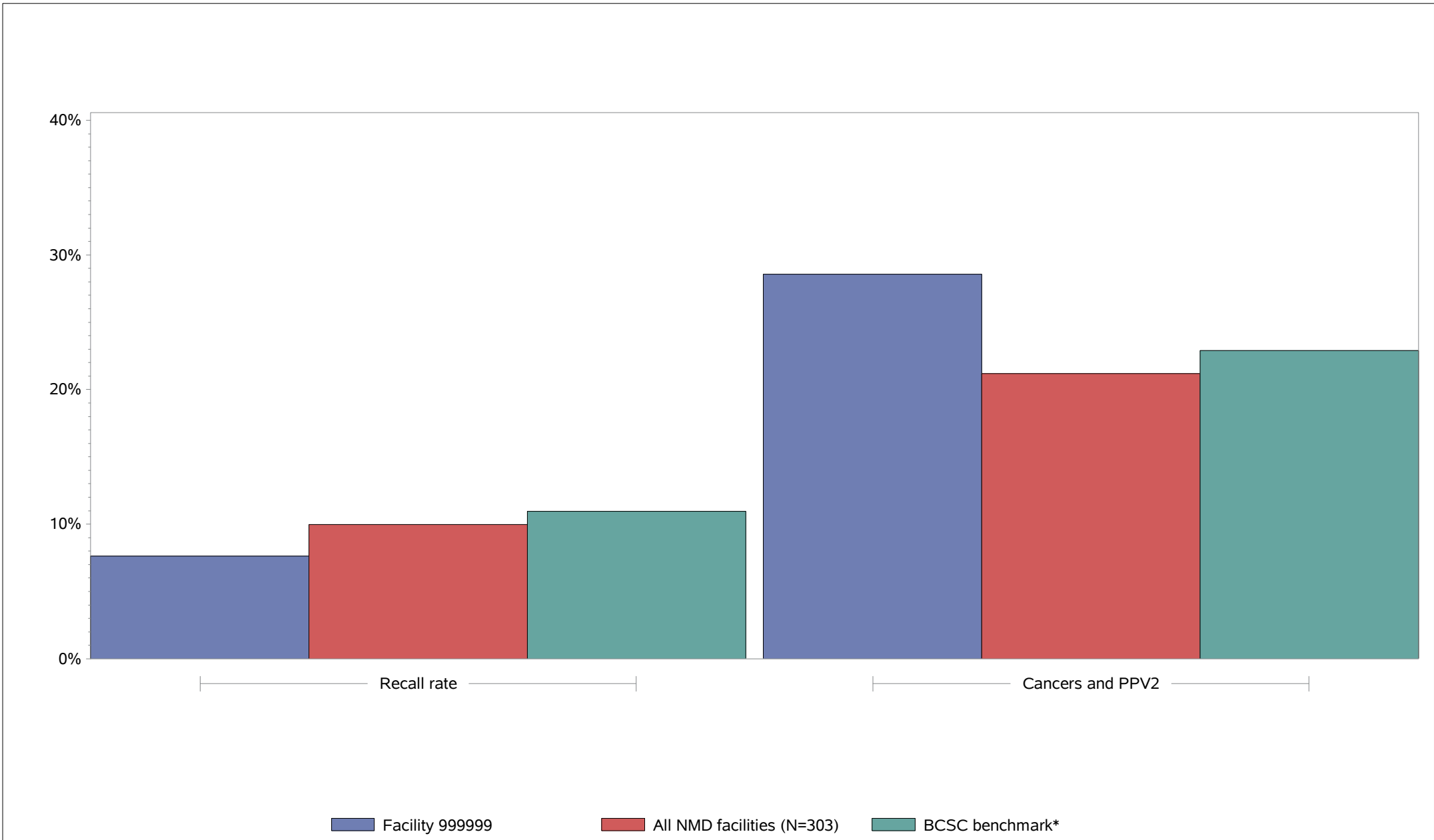
Measure	Definition
Tumor stage	Number and percent of tumors by stage, where stage is reported
Tumor size	Number and percent of tumors by size, in mm, where size is reported (Tumor size is set to zero for all DCIS lesions.)
Inappropriate use of BI-RADS 3 (PQRS 146)	Number and percent of screening exams with a BI-RADS assessment category of 3.

To learn more about the Qualified Clinical Data Registry (QCDR) option and ACRad measures, please click below
<http://www.acr.org/Quality-Safety/National-Radiology-Data-Registry/Qualified-Clinical-Data-Registry>

Section 1: Outcome measures and demographic data for exams with at least 365 days follow-up

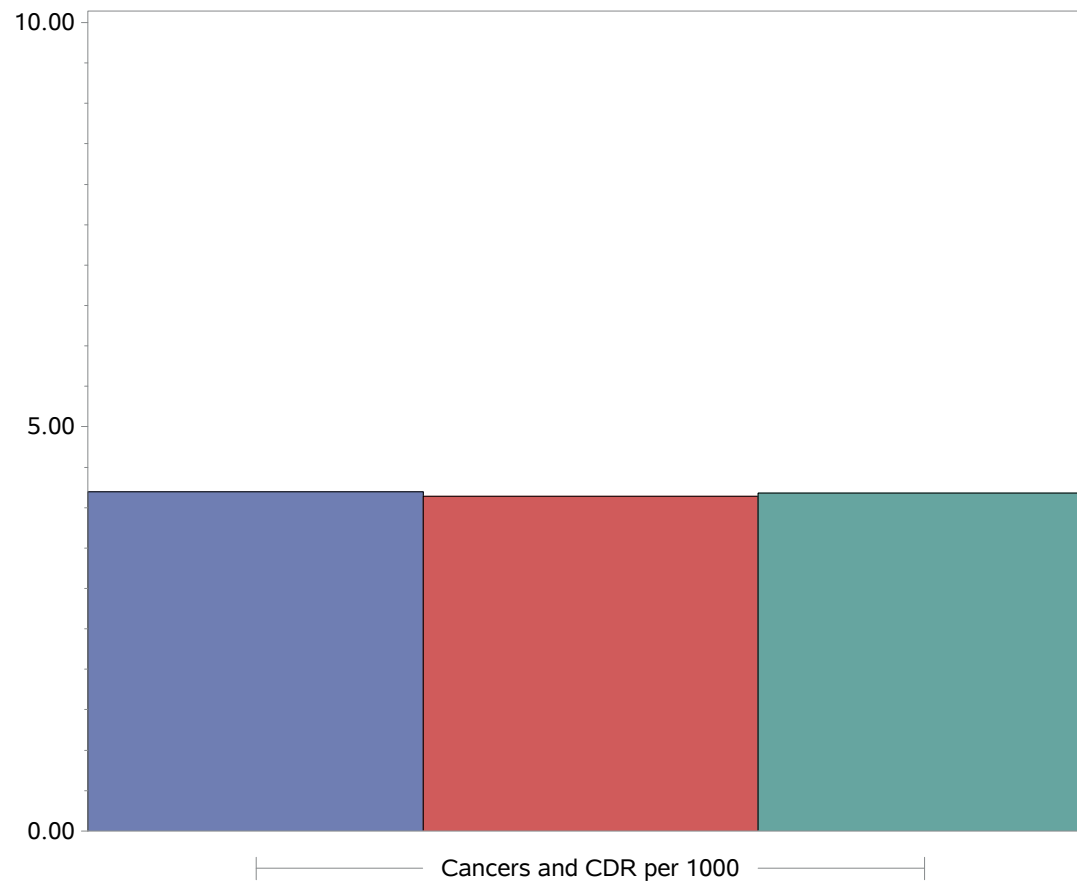
*(Physicians with no exams with at least 365 days follow-up receive only NMD aggregate and benchmark data in this section.
Preliminary data for the facility are available in Section 2.)*

Abnormal Interpretations and Cancers for Screening Mammography
Recall Rate and PPV2
January 2015 - December 2015: Comparisons



*BCSC benchmark data are calculated using screen-detected cancers; NMD data may include some interval cancers.

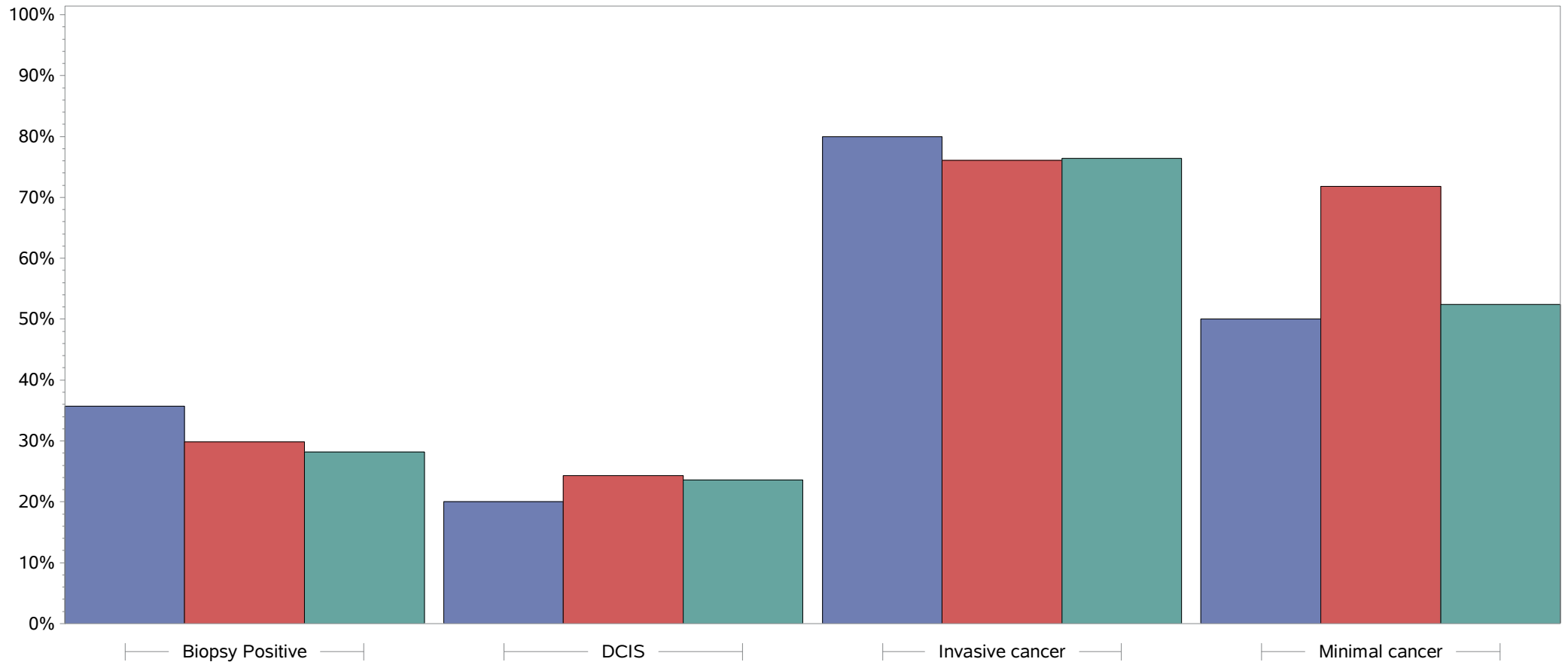
Abnormal Interpretations and Cancers for Screening Mammography
Cancer Detection Rate (CDR)
January 2015 - December 2015: Comparisons



Facility 999999 All NMD facilities (N=303) BCSC benchmark*

*BCSC benchmark data are calculated using screen-detected cancers; NMD data may include some interval cancers.

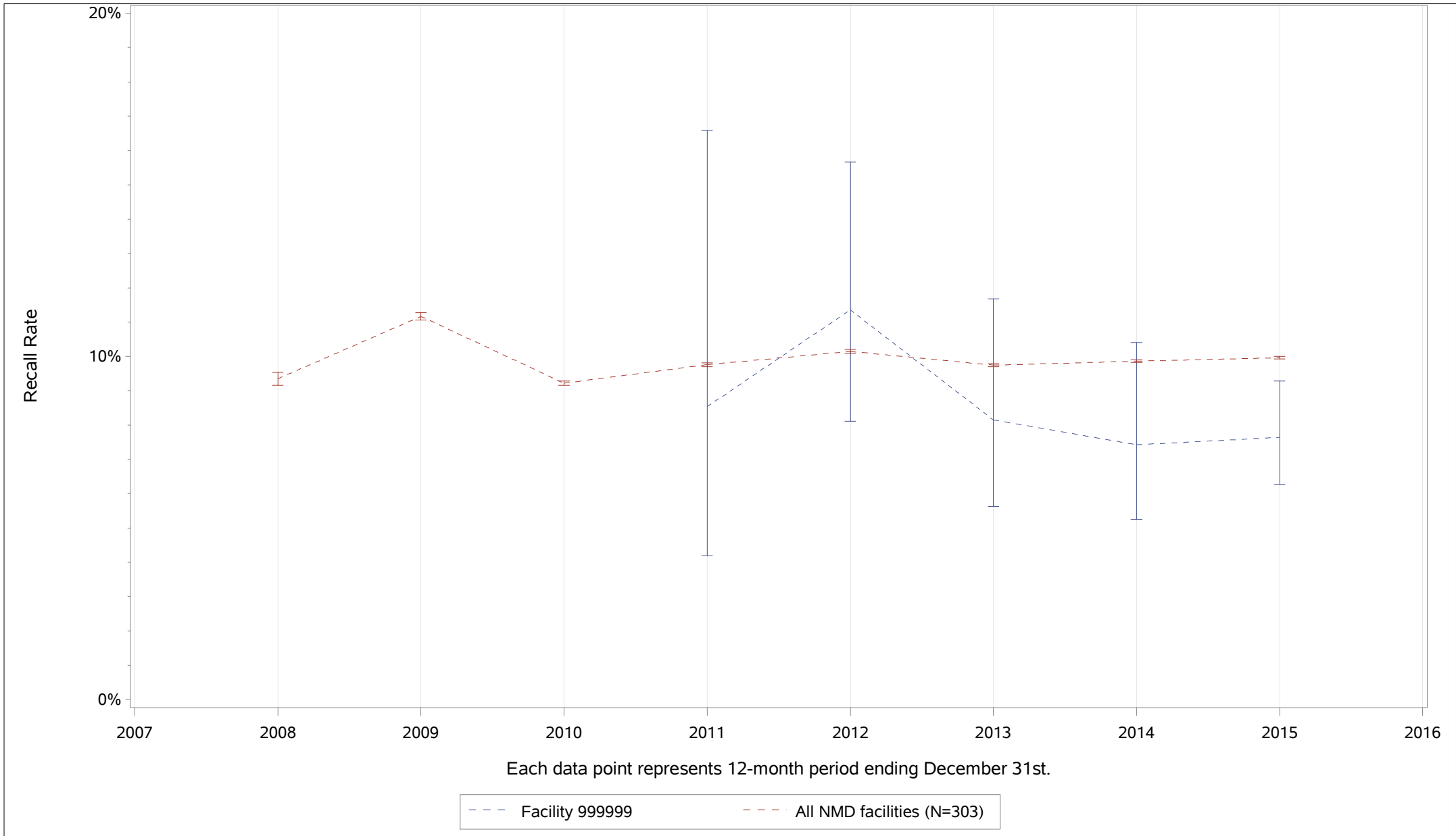
**Abnormal Interpretations and Cancers for Screening Mammography
Biopsy Results
January 2015 - December 2015: Comparisons**



■ Facility 999999
 ■ All NMD facilities (N=303)
 ■ BCSC benchmark*

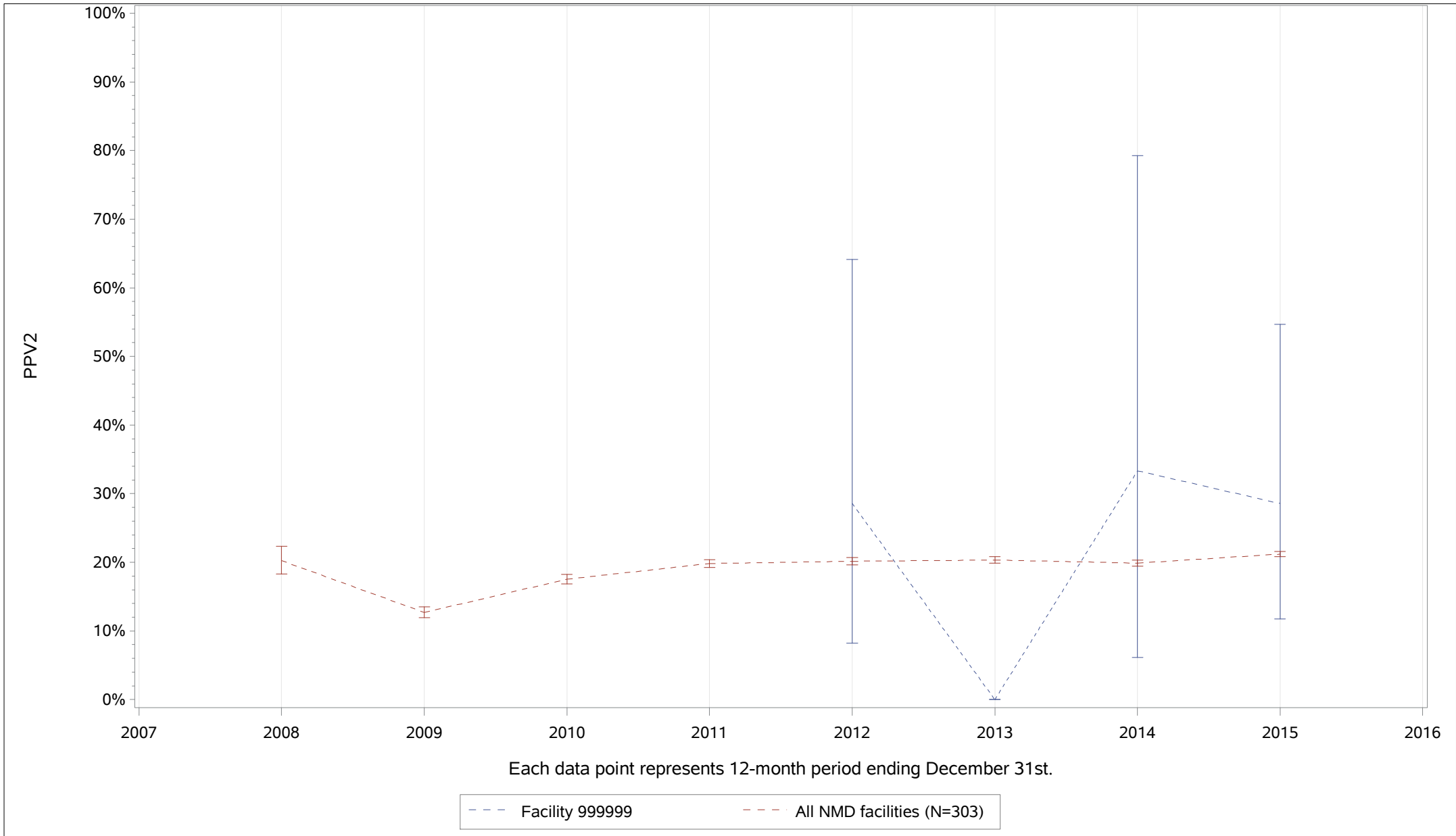
*BCSC benchmark data are calculated using screen-detected cancers; NMD data may include some interval cancers.

Trends: Abnormal Interpretations and Cancers for Screening Mammography Recall Rate



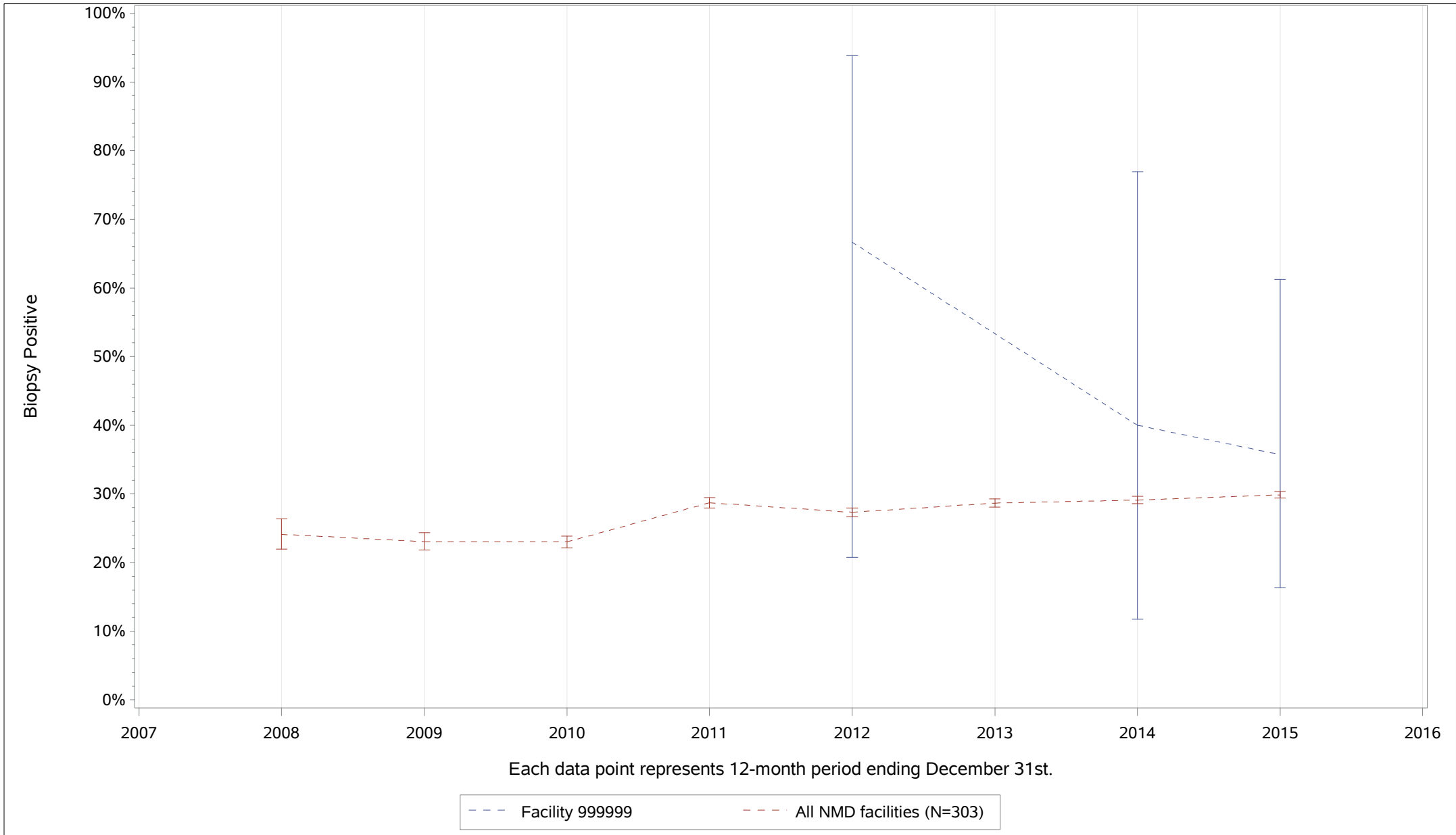
There are three points for each physician in each data period: the mid-point represents the rate for the physician, the high and low points represent the upper and lower 95% confidence limits.

Trends: Abnormal Interpretations and Cancers for Screening Mammography PPV2



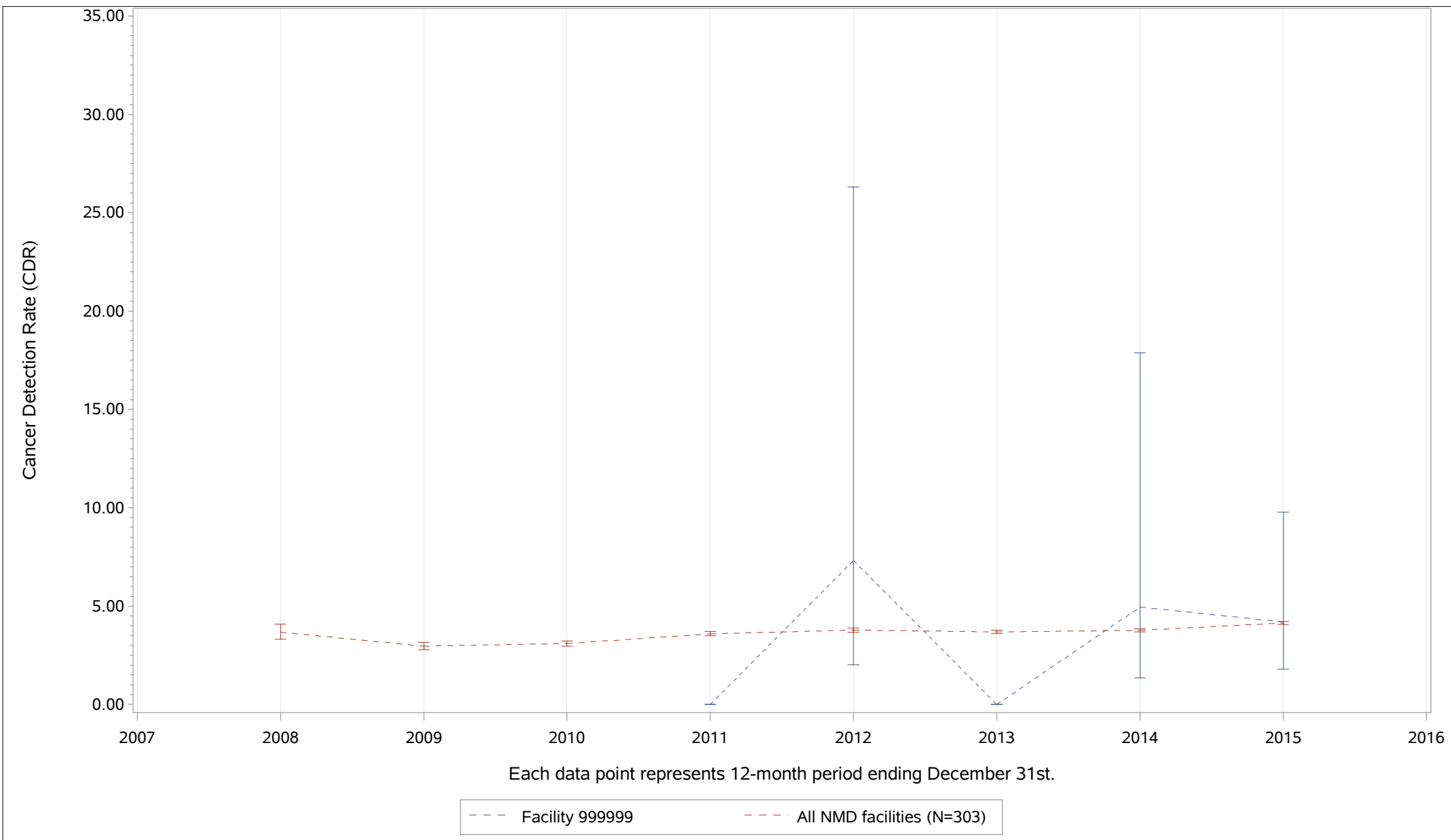
There are three points for each physician in each data period: the mid-point represents the rate for the physician, the high and low points represent the upper and lower 95% confidence limits.

Trends: Abnormal Interpretations and Cancers for Screening Mammography Biopsy Positive



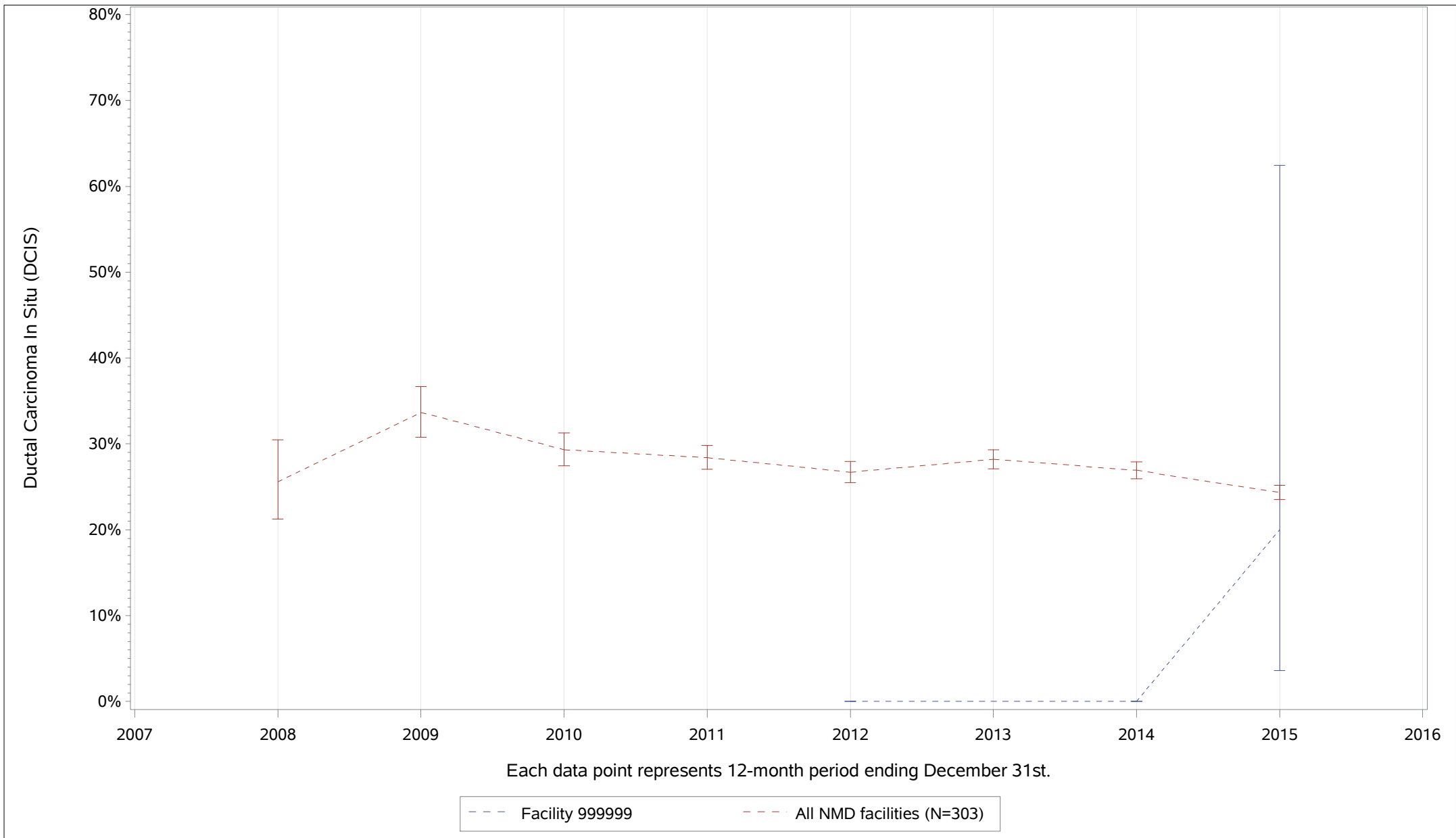
There are three points for each physician in each data period: the mid-point represents the rate for the physician, the high and low points represent the upper and lower 95% confidence limits.

Trends: Abnormal Interpretations and Cancers for Screening Mammography Cancer Detection Rate (CDR)



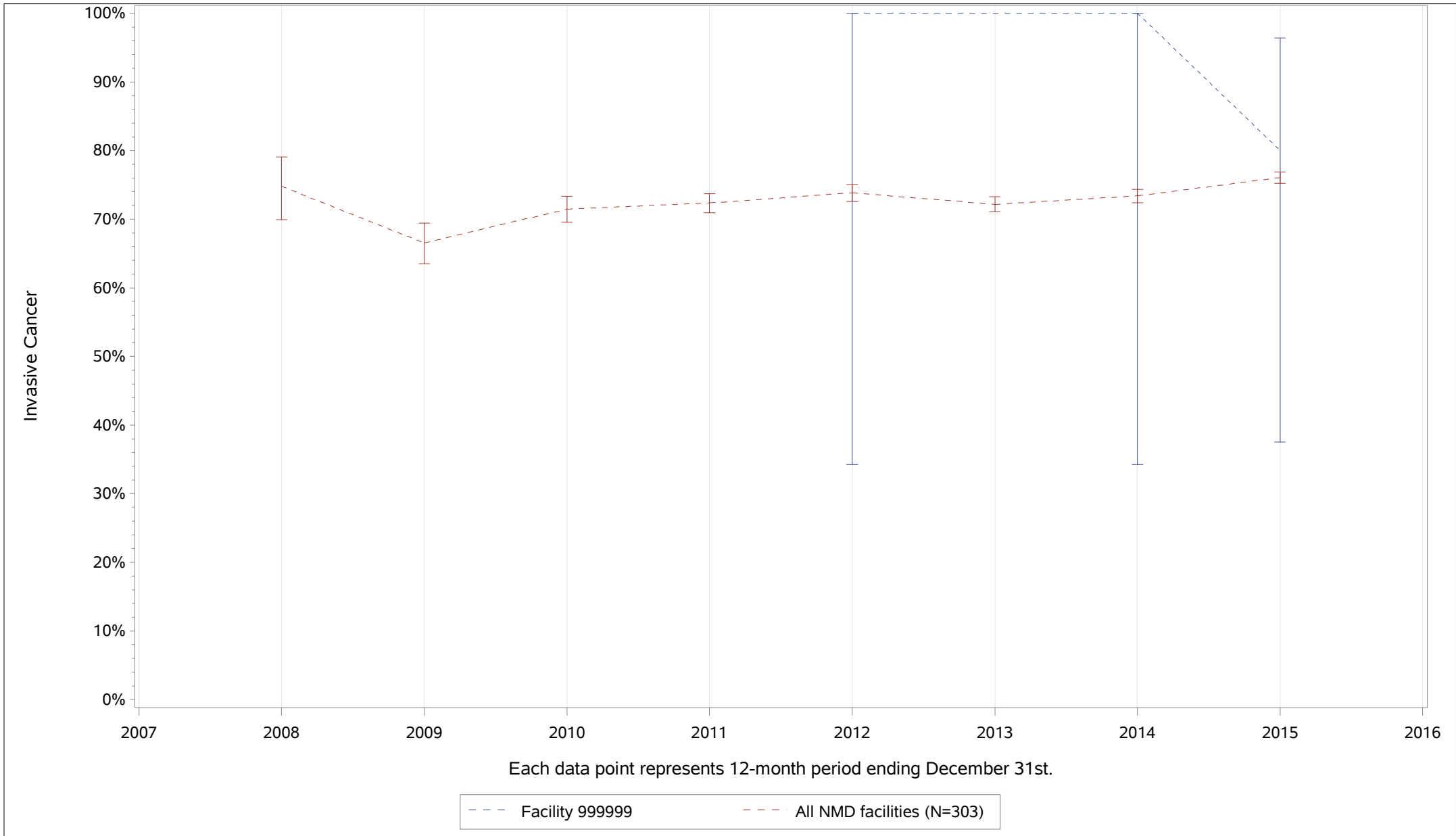
There are three points for each physician in each data period: the mid-point represents the rate for the physician, the high and low points represent the upper and lower 95% confidence limits.

Trends: Abnormal Interpretations and Cancers for Screening Mammography Ductal Carcinoma In Situ (DCIS)



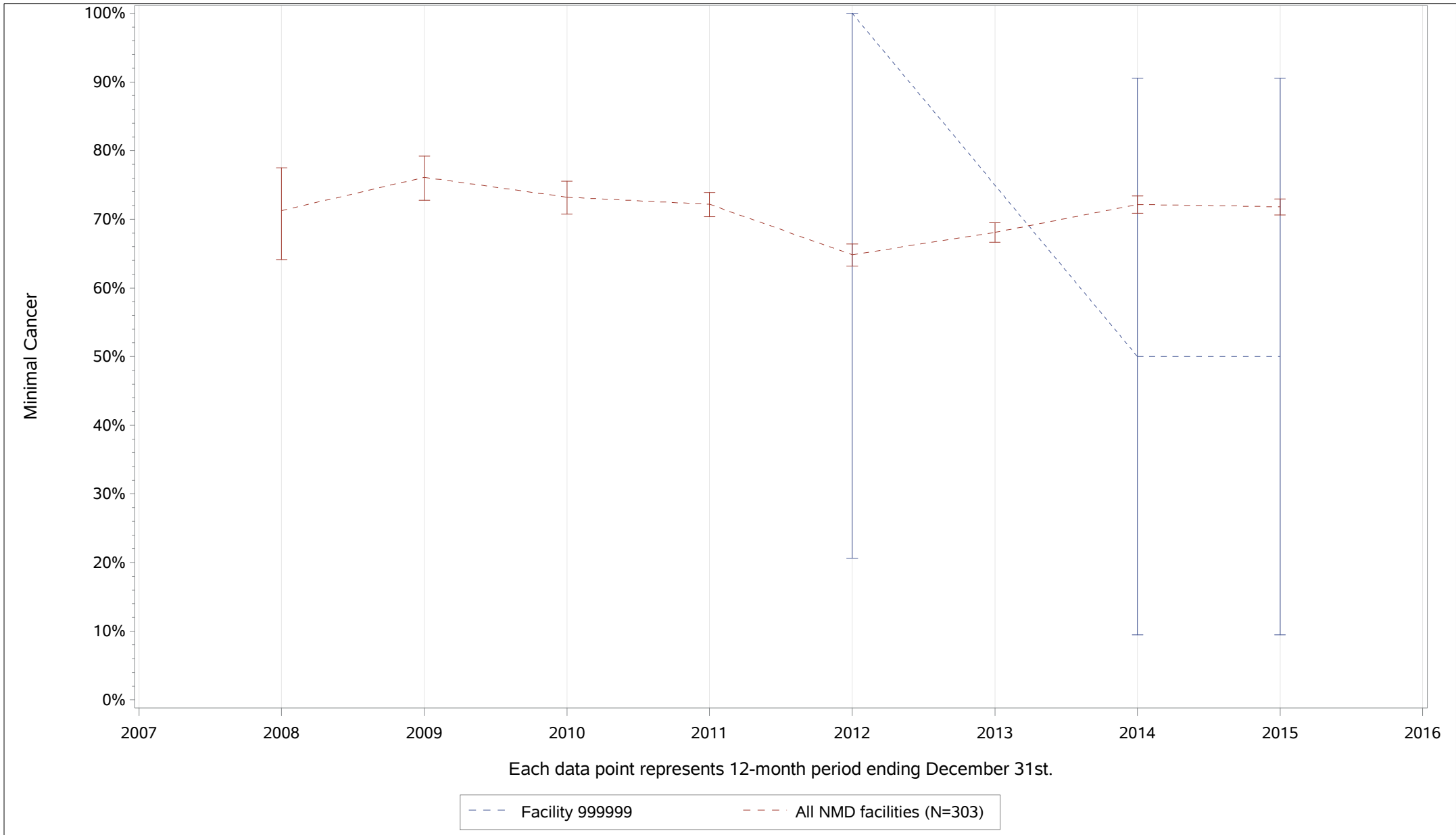
There are three points for each physician in each data period: the mid-point represents the rate for the physician, the high and low points represent the upper and lower 95% confidence limits.

Trends: Abnormal Interpretations and Cancers for Screening Mammography Invasive Cancer



There are three points for each physician in each data period: the mid-point represents the rate for the physician, the high and low points represent the upper and lower 95% confidence limits.

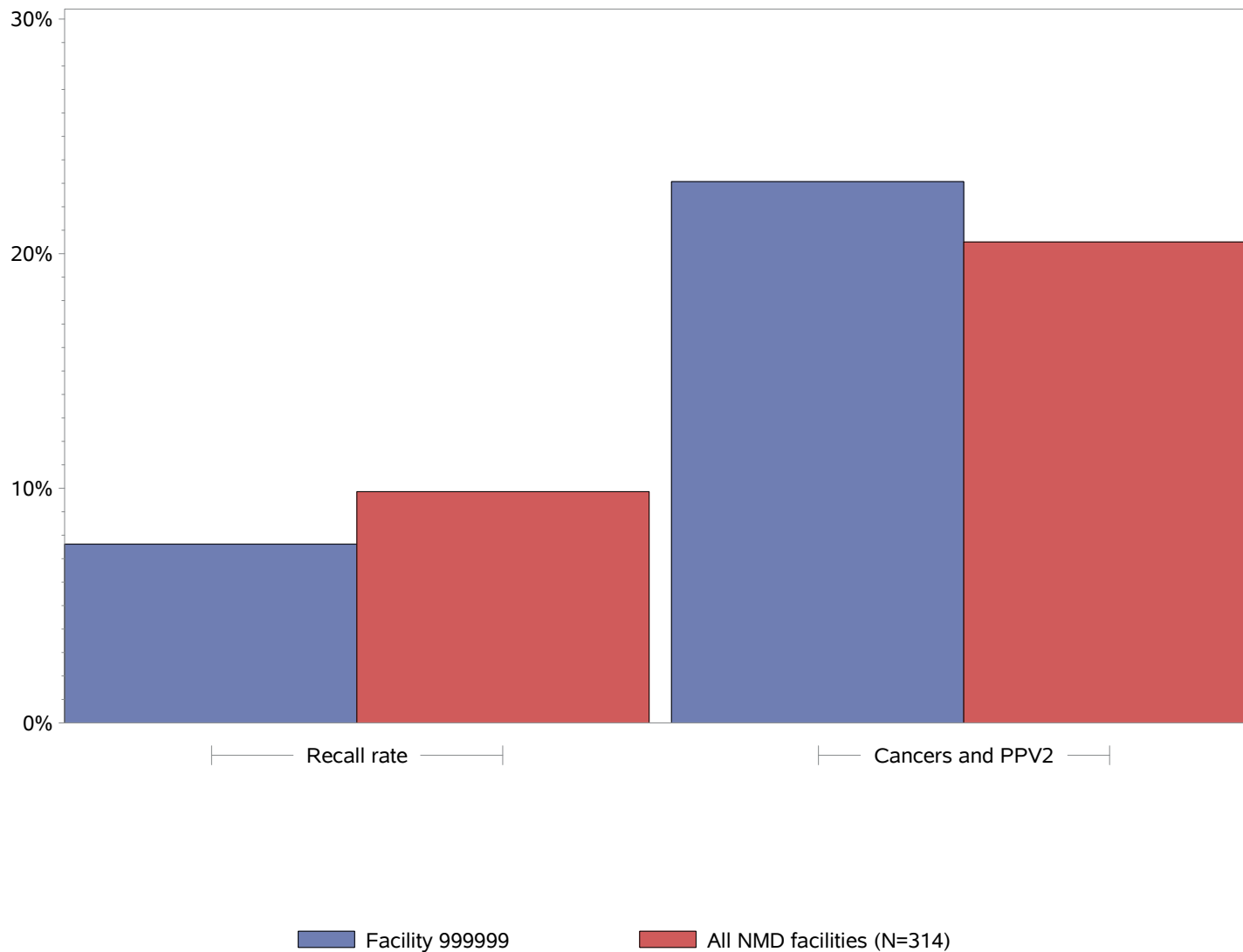
Trends: Abnormal Interpretations and Cancers for Screening Mammography Minimal Cancer



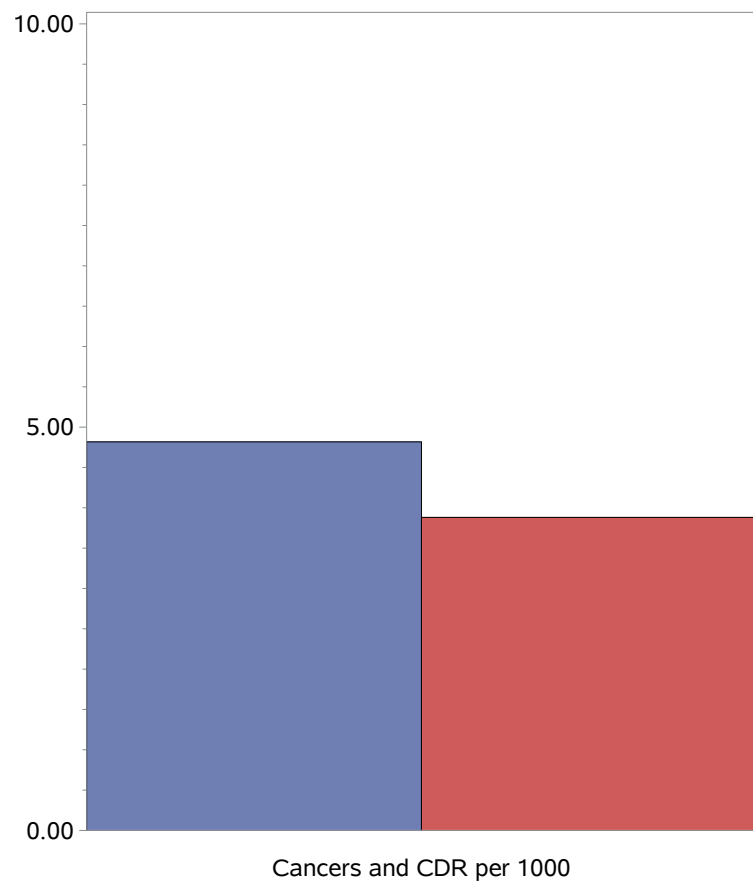
There are three points for each physician in each data period: the mid-point represents the rate for the physician, the high and low points represent the upper and lower 95% confidence limits.

Section2: Preliminary data on exams performed in the most recent 12 months

PRELIMINARY OUTCOME DATA; FINAL DATA WILL BE AVAILABLE 12 MONTHS AFTER EXAM DATE
Abnormal Interpretations and Cancers for Screening Mammography
Recall Rate and PPV2
January 2016 - December 2016: Comparisons



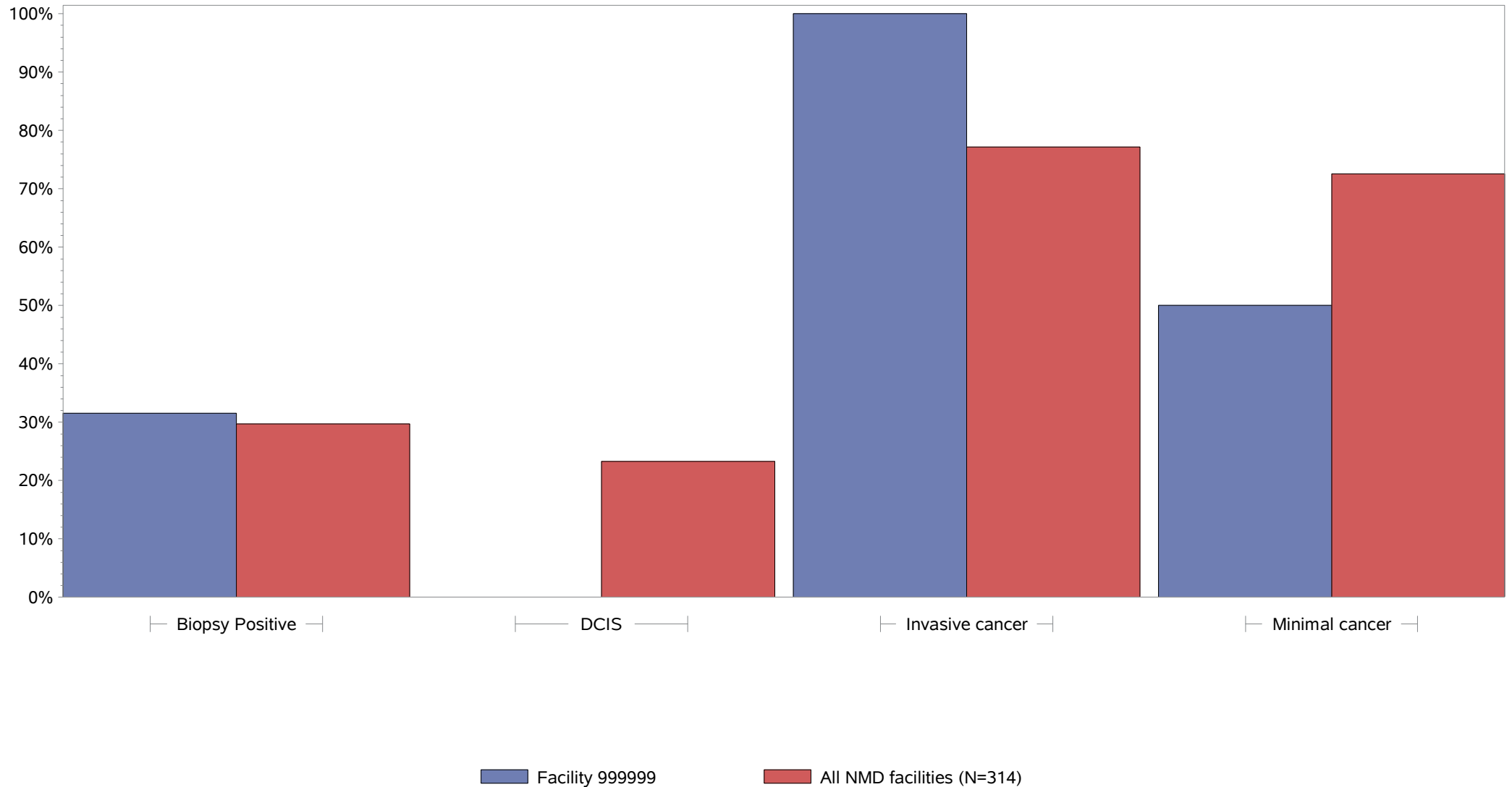
PRELIMINARY OUTCOME DATA; FINAL DATA WILL BE AVAILABLE 12 MONTHS AFTER EXAM DATE
Abnormal Interpretations and Cancers for Screening Mammography
Cancer Detection Rate (CDR)
January 2016 - December 2016: Comparisons



Facility 999999

All NMD facilities (N=314)

PRELIMINARY OUTCOME DATA; FINAL DATA WILL BE AVAILABLE 12 MONTHS AFTER EXAM DATE
Abnormal Interpretations and Cancers for Screening Mammography
Biopsy Results
January 2016 - December 2016: Comparisons



Promote your participation in NRDR™!
Download your marketing toolkit today.

acr.org/NMDtoolkit

CONTACT US

1.800.227.5463, ext. 3535

nrd@acr.org | nrd.acr.org

