

# NEURORADIOLOGY — BRAIN, HEAD/NECK AND SPINE

Earn up to 35 AMA PRA Category 1 Credits™ and 25 SAM Credits

ACR MEMBER: \$3,500

MEMBER-IN-TRAINING: \$1,750

NON-MEMBER: \$5,000



Faculty:

**Nafi Aygun, MD**

Course Director  
Johns Hopkins University



**Mahmud Mossa-Basha, MD**

Course Director  
University of Washington

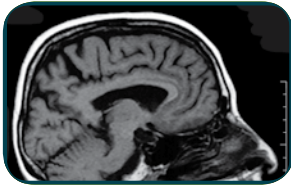
## Course Dates

March 9–11 (Mon. – Wed.)

September 28–30 (Mon. – Wed.)

December 14–16 (Mon. – Wed.)

## Course Overview



This three-day neuroradiology course, led by Nafi Aygun, MD and Mahmud Mossa-Basha, MD, includes the four domains of neuroradiology in brain, spine, head and neck, and pediatric neuroimaging. The material will be nearly exclusively centered on CT and MR imaging with advanced application techniques. General disease categories of vascular,

inflammatory, demyelinating, traumatic, degenerative, neoplastic, congenital and metabolic diseases of the CNS and the head and neck in adults and children will be covered with case material.

The lectures each day will introduce common themes for differential diagnoses and lay the groundwork for extensive time devoted to reviewing a library of cases ranging in difficulty and disease type. Attendees can personalize their course by selecting more cases from one subspecialty area than another to remedy perceived weaknesses.

## Program Objectives

At the conclusion of this course, participants will be able to:

- Provide limited relevant differential diagnoses for masses in different regions of the brain, spine, and head and neck
- Prioritize imaging studies and provide pertinent imaging features that will guide therapy in patients with strokes or other vascular lesions of the brain or spine
- Correctly utilize the terms accepted by the American Society of Neuroradiology for describing degenerative spondylotic disease of the cervical and lumbar spine
- List imaging features that help clinicians provide accurate TNM staging of head and neck cancers
- Differentiate among the many causes of sensorineural and conductive hearing loss through neuroimaging
- List features that distinguish the various cysts of the head and neck

## Workstation

FUJI Synapse

## Certificate

Attendees who complete a minimum of 100 cases will receive a Certificate of Completion in Neuroradiology.

Accreditation Statement: The American College of Radiology is accredited by the Accreditation Council for Continuing Medical Education to provide continuing medical education for physicians.

Designation Statement: The American College of Radiology designates this live activity for a maximum of 35 AMA PRA Category 1 Credits™. Physicians should claim only the credit commensurate with the extent of their participation in the activity.

Qualified on 12/17/2018, this activity meets the American Board of Radiology's criteria for a self-assessment (SAM) activity and is designated for up to 25 SAM Credits toward the ABR Maintenance of Certification program.

	7:00 a.m.	Workstation Introduction
	<b>8:00 a.m.</b>	<b>Brain Neoplasms</b>
	<b>8:30 a.m.</b>	<b>Brain White Matter Disease</b>
	9:00 a.m.	ACR Case Engine Introduction
	9:15 a.m.	Supervised Brain Case Review
	10:00 a.m.	Break
	10:15 a.m.	Supervised Brain Case Review
	Noon	Lunch
	<b>12:30 p.m.</b>	<b>Brain Trauma</b>
	<b>1:00 p.m.</b>	<b>Neurovascular</b>
	1:30 p.m.	Supervised Brain Case Review
	2:45 p.m.	Break
	<b>3:00 p.m.</b>	<b>Congenital Brain Lesions</b>
	4:00 p.m.	Supervised Brain Case Review
	<b>4:45 p.m.</b>	<b>Head and Neck Anatomy</b>
	5:30 p.m.	Cocktail Reception
	6:00 p.m.	Optional Time for Self-Review of Cases
	10:00 p.m.	ACR Education Center Closes
<b>Day 1: Brain</b>	7:00 a.m.	Optional Time for Self-Review of Cases
	<b>8:00 a.m.</b>	<b>Squamous Cell Carcinoma Overview: AJCC Staging</b>
	<b>8:30 a.m.</b>	<b>Temporal Bone Overview</b>
	9:30 a.m.	Supervised Head and Neck Case Review
	10:00 a.m.	Break
	10:15 a.m.	Supervised Head and Neck Case Review
	Noon	Lunch
	<b>12:30 p.m.</b>	<b>Sinonasal Imaging</b>
	<b>1:00 p.m.</b>	<b>Nodal Disease</b>
	1:30 p.m.	Supervised Head and Neck Case Review
	2:45 p.m.	Break
	<b>3:00 p.m.</b>	<b>Cysts in the Head and Neck</b>
	3:30 p.m.	Supervised Head and Neck Case Review
	5:30 p.m.	Break
	6:00 p.m.	Optional Time for Self-Review of Cases
	10:00 p.m.	ACR Education Center Closes
<b>Day 2: Head and Neck</b>	7:00 a.m.	Optional Time for Self-Review of Cases
	<b>8:00 a.m.</b>	<b>DJD Nomenclature</b>
	<b>8:30 a.m.</b>	<b>Extradural Non-DJD Spine Disease</b>
	9:00 a.m.	Supervised Spine Case Review
	10:00 a.m.	Break
	10:15 a.m.	Supervised Spine Case Review
	<b>11:00 a.m.</b>	<b>Intradural Extramedullary Disease</b>
	<b>11:30 a.m.</b>	<b>Intradural Intramedullary Disease</b>
	Noon	Lunch
	12:30 p.m.	Supervised Spine Case Review
	2:45 p.m.	Break
	3:00 p.m.	Supervised Spine Case Review
	4:00 p.m.	Course Concludes
<b>Day 3: Spine</b>		

Lectures are in bold

1-800-373-2204 | [acr.org/NeuroRad](http://acr.org/NeuroRad)