



ASSESSMENT CATEGORIES WITH PREDICTIVE FEATURES

Marker of Biological Activity (aggressiveness)

MSK-RADS (Bone) Score

0 Incompletely
Characterized

1 Very Likely
Benign

2 Probably Benign

3 Potentially
Malignant

4 Highly Suspicious
for Malignancy

Markers or Features of Tumor Histology

Demographics Past Medical History

- Age
- Gender
- Known primary cancer?

Location



Site within skeleton

- Long bone
- Flat bone
- Spine



Long Axis

- Epiphysis
- Metaphysis
- Diaphysis



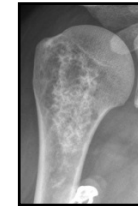
Short Axis

- Central
- Eccentric
- Cortical
- Surface

Matrix



Osteoid



Chondroid



Fibrous



None