

Group Overall Report

This report shows all the peer review done within a specific date range.

The 'All Groups' percentages compare your group's scores against all RADPEER participants.

Group Overall Report

Group ID #: 999
 Site: Combined
 Total # Participating Physicians: 5
 Report Date: 11/15/2017
 Report Period: From: 05/15/2017
 To: 11/15/2017

	Total	1	2a	2b	3a	3b	Clinically Significant
Radiography:	(7) 1.11%	(6) 85.71%	(0) 0.00%	(0) 0.00%	(1) 14.29%	(0) 0.00%	(0) 0.00%
Ultrasound:	(132) 20.92%	(130) 98.48%	(0) 0.00%	(2) 1.52%	(0) 0.00%	(0) 0.00%	(2) 1.52%
CT:	(37) 5.86%	(32) 86.49%	(0) 0.00%	(1) 2.70%	(3) 8.11%	(1) 2.70%	(2) 5.41%
MRI:	(144) 22.82%	(142) 98.61%	(0) 0.00%	(0) 0.00%	(2) 1.39%	(0) 0.00%	(0) 0.00%
Nuclear Medicine:	(242) 38.35%	(232) 95.87%	(8) 3.31%	(1) 0.41%	(1) 0.41%	(0) 0.00%	(1) 0.41%
Mammography:	(14) 2.22%	(14) 100.00%	(0) 0.00%	(0) 0.00%	(0) 0.00%	(0) 0.00%	(0) 0.00%
Interventional:	(0) 0.00%	(0) 0.00%	(0) 0.00%	(0) 0.00%	(0) 0.00%	(0) 0.00%	(0) 0.00%
PET:	(0) 0.00%	(0) 0.00%	(0) 0.00%	(0) 0.00%	(0) 0.00%	(0) 0.00%	(0) 0.00%
Fluoroscopy:	(55) 8.72%	(55) 100.00%	(0) 0.00%	(0) 0.00%	(0) 0.00%	(0) 0.00%	(0) 0.00%
Total	(631) 100.00%	(611) 96.83%	(8) 1.27%	(4) 0.63%	(7) 1.11%	(1) 0.16%	(5) 0.79%
All Groups		98.09%	1.58%	0.08%	0.17%	0.08%	0.16%

Privileged and Confidential Peer Review Information

Release or Disclosure of this document is prohibited in accordance with 8.01-581.17 Code of Virginia

Individual Physician Report

RADPEER™



This number reflects what **has been peer reviewed** and characterizes peers' assessment of this physician's interpretive performance. In this example physician '008' was reviewed 23 time by others in the group.

The 'Group Average' compares the physician to all others in your group.

The bottom statement reflects how many cases physician '008' has **peer reviewed others** in the group

Individual Physician Report

Group ID #: 999 Report Date: 03/07/2018
 Physician ID: 008 Report Period: From: 09/07/2017 To: 03/07/2018

Site: Combined

	Total	1	2a	2b	3a	3b	Clinically Significant
Radiography:	(1) 4.35%	(1) 100.00%	(0) 0.00%	(0) 0.00%	(0) 0.00%	(0) 0.00%	(0) 0.00%
Ultrasound:	(6) 26.09%	(6) 100.00%	(0) 0.00%	(0) 0.00%	(0) 0.00%	(0) 0.00%	(0) 0.00%
CT:	(11) 47.83%	(6) 54.55%	(3) 27.27%	(1) 9.09%	(1) 9.09%	(0) 0.00%	(1) 9.09%
MRI:	(1) 4.35%	(1) 100.00%	(0) 0.00%	(0) 0.00%	(0) 0.00%	(0) 0.00%	(0) 0.00%
Nuclear Medicine:	(0) 0.00%	(0) 0.00%	(0) 0.00%	(0) 0.00%	(0) 0.00%	(0) 0.00%	(0) 0.00%
Mammography:	(1) 4.35%	(1) 100.00%	(0) 0.00%	(0) 0.00%	(0) 0.00%	(0) 0.00%	(0) 0.00%
Interventional:	(1) 4.35%	(1) 100.00%	(0) 0.00%	(0) 0.00%	(0) 0.00%	(0) 0.00%	(0) 0.00%
PET:	(1) 4.35%	(1) 100.00%	(0) 0.00%	(0) 0.00%	(0) 0.00%	(0) 0.00%	(0) 0.00%
Fluoroscopy:	(1) 4.35%	(1) 100.00%	(0) 0.00%	(0) 0.00%	(0) 0.00%	(0) 0.00%	(0) 0.00%
Total	(23) 100%	(18) 78.26%	(3) 13.04%	(1) 4.35%	(1) 4.35%	(0) 0.00%	(1) 4.35%
Group Average		96.40%	1.65%	0.75%	1.05%	0.15%	(6) 0.90%

Physician 008 has reviewed 645 out of 667 total group reviews of this report period

Privileged and Confidential Peer Review Information

Release or Disclosure of this document is prohibited in accordance with 8.01-581.17 Code of Virginia

Physician Reviewed Record Summary

As the title indicates, this report breaks down how many studies, by modality, each physician peer reviewed in the group.

RADPEER™



Physician Reviewed Record Summary

Group ID #:	4000	Report Date:	04/14/2017
Total # Participating Physicians:	14	Report Period:	From: 10/14/2016 To: 04/14/2017

Physician	XR	US	CT	MR	NM	MA	IR	PET	RF	Total
002	6	2	11	19	0	1	0	0	1	40
003	0	0	0	0	0	0	0	0	0	0
004	0	0	0	0	0	0	0	0	0	0
009	0	0	0	0	0	0	0	0	0	0
022	0	0	0	0	0	0	0	0	0	0
123	1	0	0	0	0	0	0	0	1	2
888	0	0	0	0	0	0	0	0	0	0
999	0	0	0	0	0	0	0	0	0	0
A15	0	0	0	0	0	0	0	0	0	0
0020	0	0	0	0	0	0	0	0	0	0
1100	0	0	0	0	0	0	0	0	0	0
3450	0	0	0	0	0	0	0	0	0	0
Marya	0	0	0	0	0	0	0	0	0	0
Marya2	0	0	2	0	0	0	1	0	0	3
All	7	2	13	19	0	1	1	0	2	45

Privileged and Confidential Peer Review Information

Release or Disclosure of this document is prohibited in accordance with 8.01-581.17 Code of Virginia

PQI Report

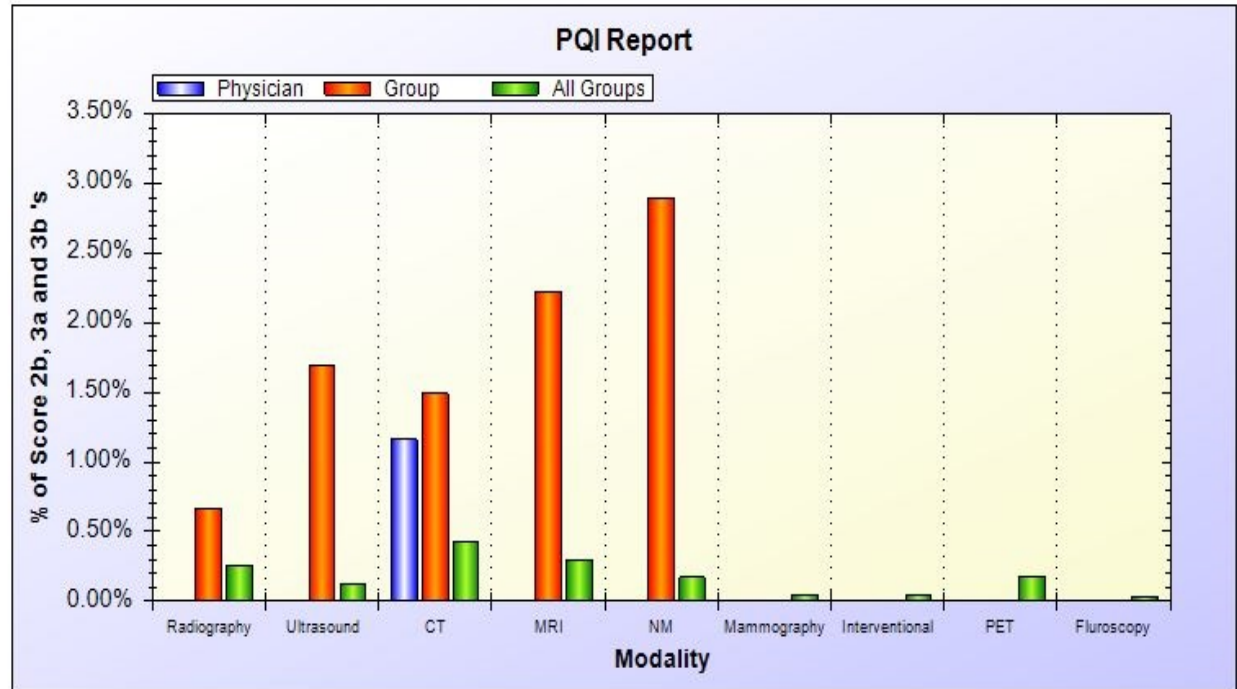
PQI Report

A radiologist whose group participates in the RADPEER™ program can select RADPEER™ as a PQI project to meet Part IV requirement for MOC.

This report provides comparison statistics (physician, group, all RADPEER™ participants) of discrepancy scores, which are 2b or greater.

Group ID #:
 Physician ID:

Report Date: 04/14/2017
 Report Period: From: 10/14/2016
 To: 04/14/2017



	Individual	Group	All
Radiography:	0.00%	0.67%	0.26%
Ultrasound:	0.00%	1.69%	0.12%
CT:	1.16%	1.49%	0.43%
MRI:	0.00%	2.22%	0.30%
Nuclear Medicine:	0.00%	2.90%	0.17%
Mammography:	0.00%	0.00%	0.05%
Interventional:	0.00%	0.00%	0.05%
PET:	0.00%	0.00%	0.18%
Fluoroscopy:	0.00%	0.00%	0.03%