



RLI Power Hour

April 4, 2023

The background of the slide is a photograph of a hand holding a glowing lightbulb. The lightbulb is surrounded by a digital network of nodes and lines, suggesting a connection between ideas and technology. The background is blurred, showing a laptop and a mouse on a desk.

Built to Last: Career Advice from a Professional Wanderer

Richard Duszak, MD, FACR



THE UNIVERSITY OF MISSISSIPPI
MEDICAL CENTER™

Built to Last: Career Advice from a Professional Wanderer

Richard Duszak, MD, FACR, FSIR, FRBMA

Professor and Chair
Department of Radiology
University of Mississippi School of Medicine

RLI Power Hour
April 4, 2023

A dramatic landscape with a dark, stormy sky and rolling hills. The sky is filled with heavy, dark blue and grey clouds, with some lighter patches where light breaks through. The hills in the foreground are dark and silhouetted against the sky. The overall mood is somber and atmospheric.

**Not all those who
wander are lost.**

J. R. R. Tolkien

About Me



FUTURE PROOF



MORE THAN ONE MILLION COPIES SOLD

**BUILT TO
LAST**

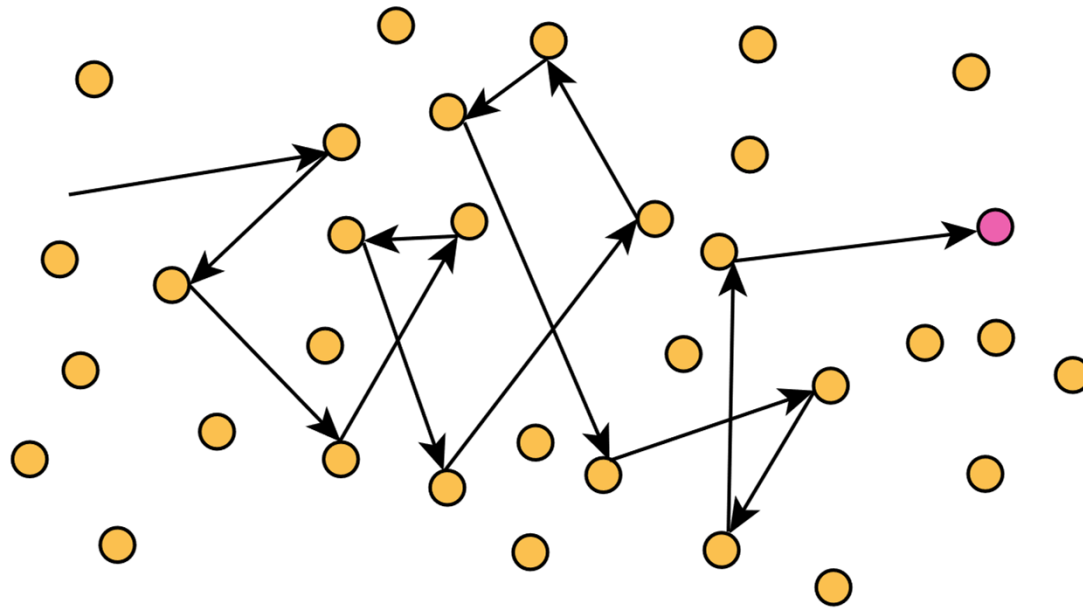
**SUCCESSFUL HABITS OF
VISIONARY COMPANIES**

JIM COLLINS

(Bestselling author of **GOOD TO GREAT**)

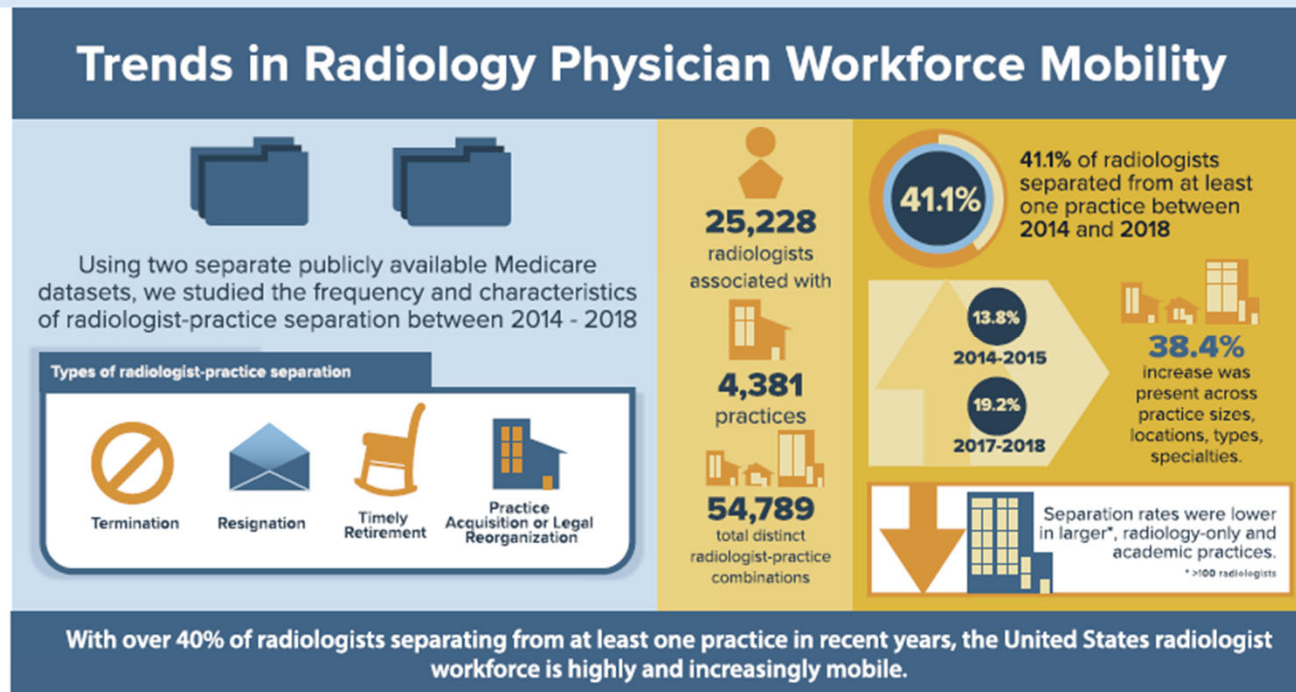
JERRY I. PORRAS

The Changing Radiologist Workforce



The Changing Radiologist Workforce

Visual abstract

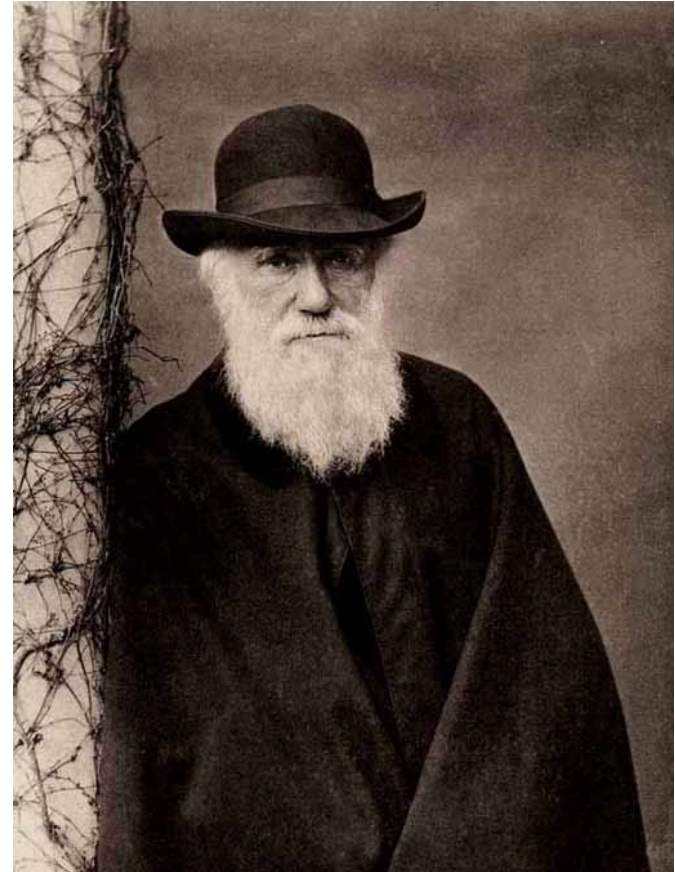


JACR VISUAL ABSTRACT



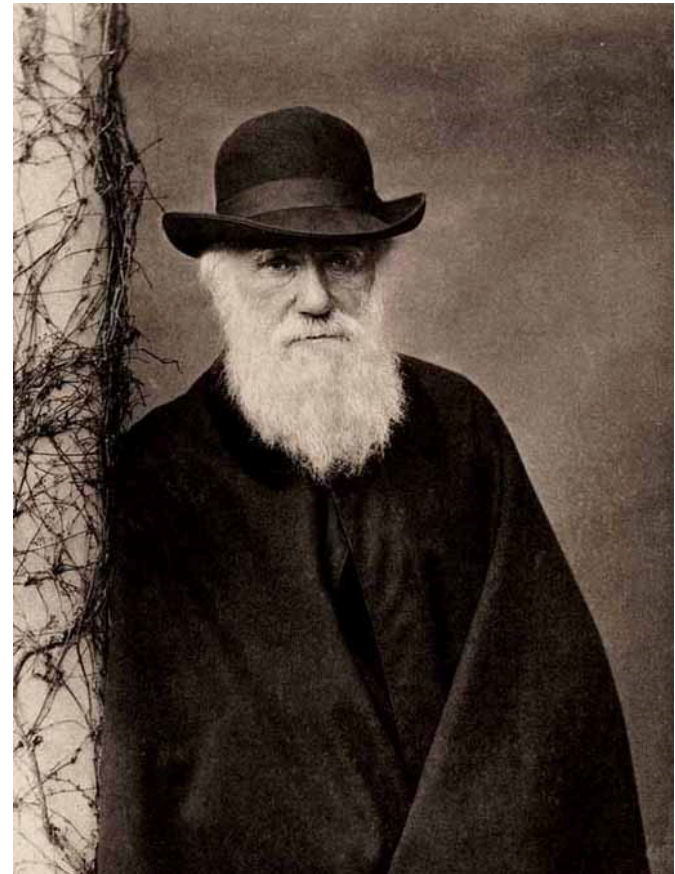
With Apologies to Darwin

*It is not the strongest
of radiologists that
succeeds, nor the
most intelligent,
but the one most
responsive to change.*



With Apologies to Darwin

*It is not the strongest
of radiologists that
succeeds, nor the
most intelligent,
but the one most
responsive to change.*



But How?

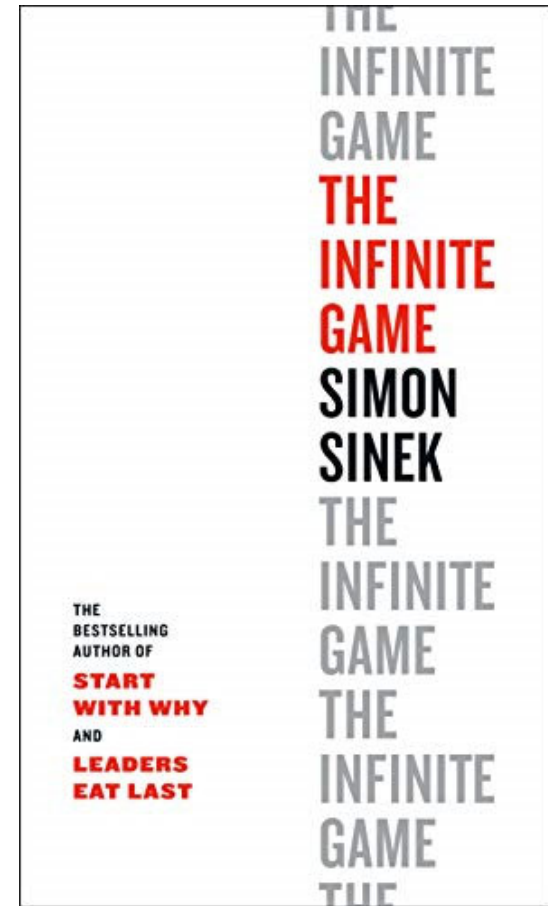
HOW?

KNOW



Find Your Just Cause

- Service oriented
- Optimistic and affirmative
- Resilient
- Inclusive
- Inspirational and idealistic



Life is an Infinite Game

- The finite game
 - All players are known
 - All rules are clear
 - There's a clear winner within a set period of time
 - The game has a beginning, a middle, and an end
- The infinite game
 - The players are both known and unknown
 - The rules are arbitrary, changing, and often unenforceable
 - There is no defined time horizon
 - There are no winners, because the object is to keep playing



Life is an Infinite Game

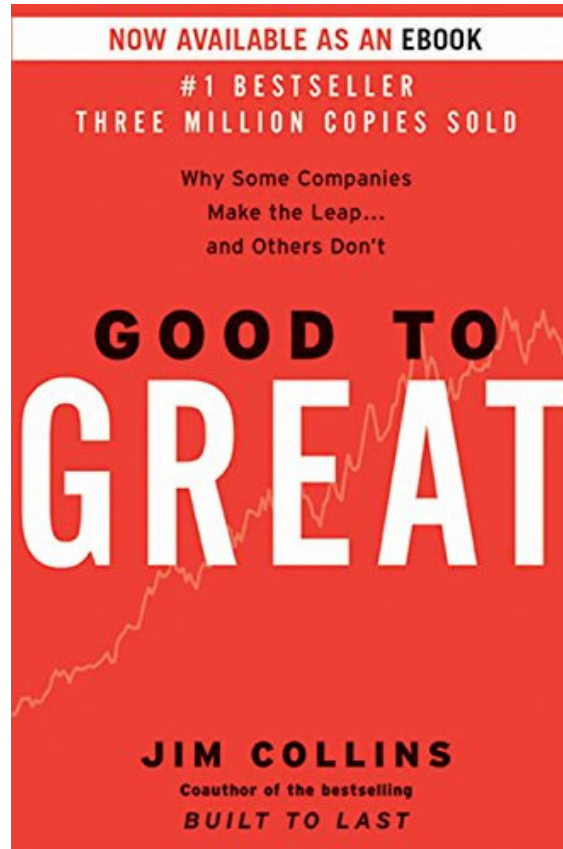
- The finite game
 - All players are known
 - All rules are clear
 - There's a clear winner within a set period of time
 - The game has a beginning, a middle, and an end
- The infinite game
 - The players are both known and unknown
 - The rules are arbitrary, changing, and often unenforceable
 - There is no defined time horizon
 - There are no winners, because **the object is to keep playing**



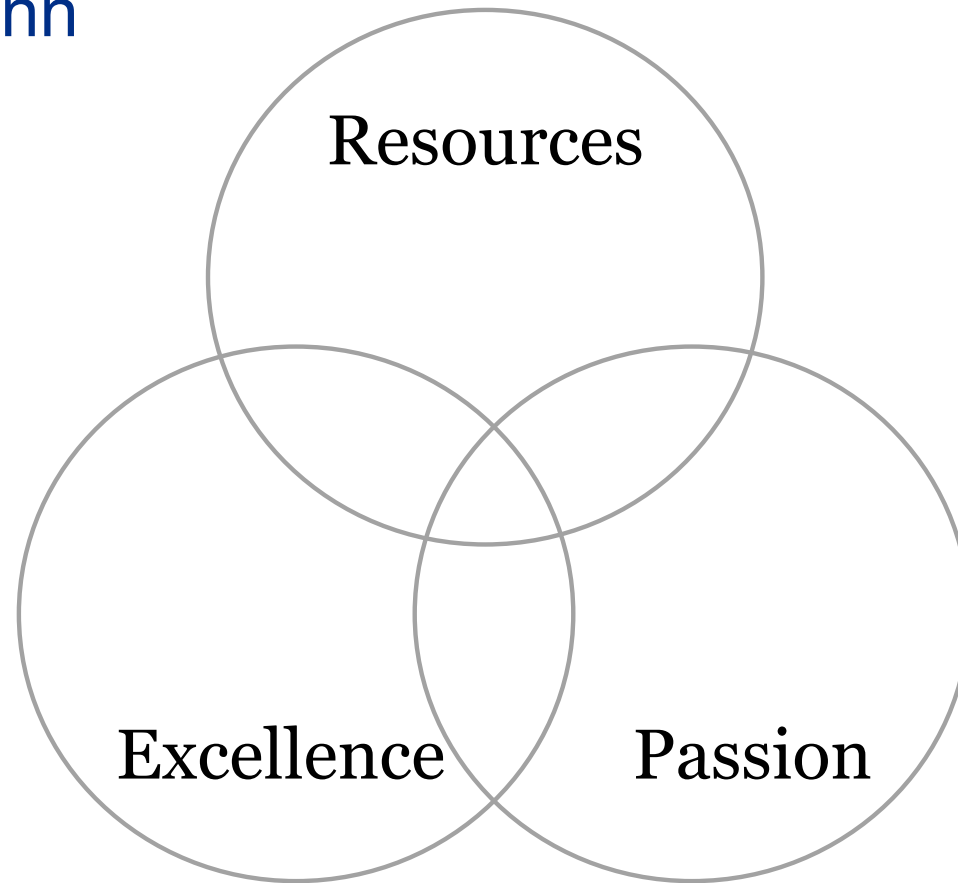
Find
your
ZEM



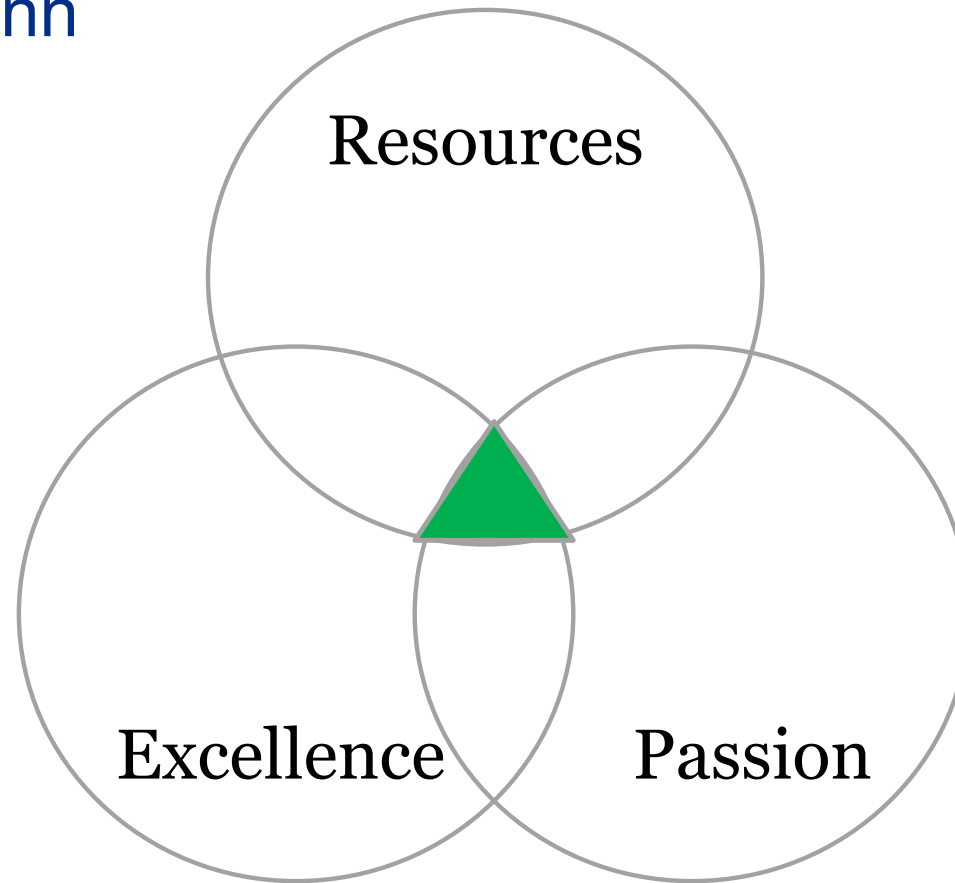
Find Your Venn



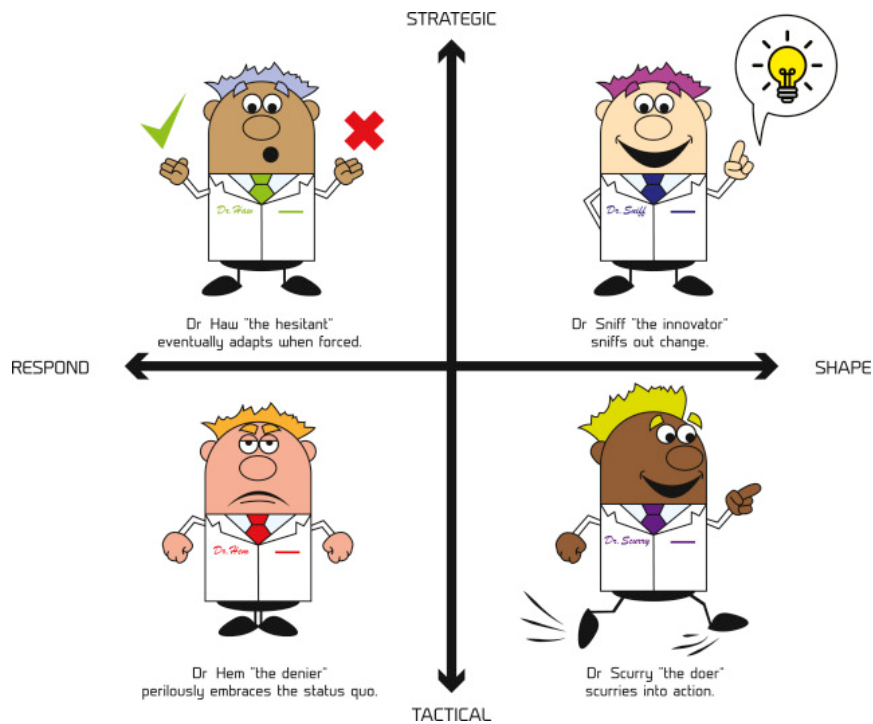
Find Your Venn



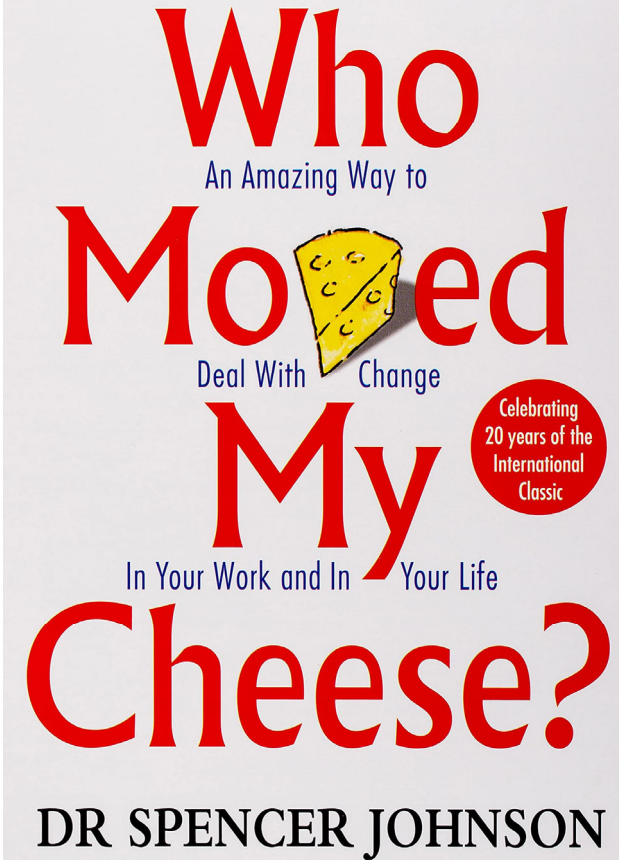
Find Your Venn



Your Cheese Will Move



Over 28 Million Copies Sold Worldwide



This Ain't Easy



What's the Alternative?



How to Avoid Career Quicksand

1. Be curious
2. Be curiouser
3. Find your Venn
4. Follow the cheese



Thank You!



rduszak@umc.edu



[@RichDuszak](https://twitter.com/RichDuszak)

