

**Marker of Biological Activity
(aggressiveness)**

Markers or Features of Tumor Histology

Bone-RADS Score

**Demographics
Past Medical
History**

Location

Matrix

0 Incompletely
Characterized

1 Very Low Risk

2 Low Risk

3 Intermediate Risk

4 High Risk

- Age
- Gender
- Primary cancer, if known



Site within skeleton

- Long bone
- Flat bone
- Spine

Long Axis

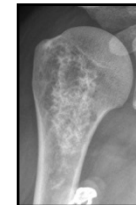
- Epiphysis
- Metaphysis
- Diaphysis

Short Axis

- Central
- Eccentric
- Cortical
- Surface



Osteoid



Chondroid



Fibrous



None