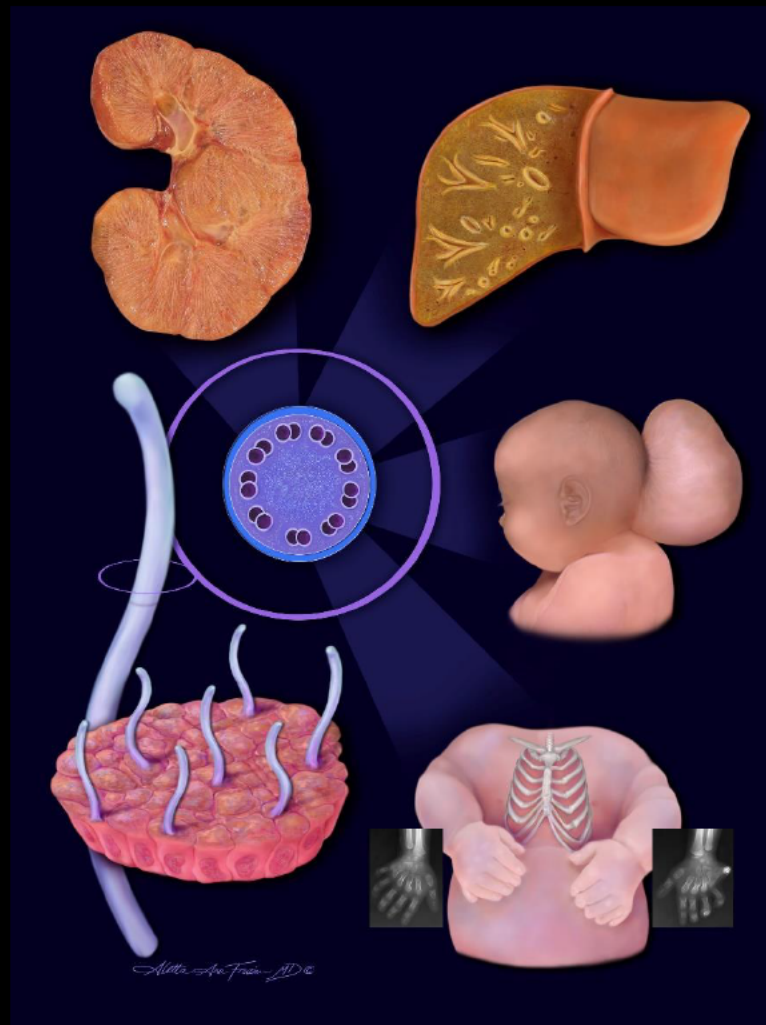


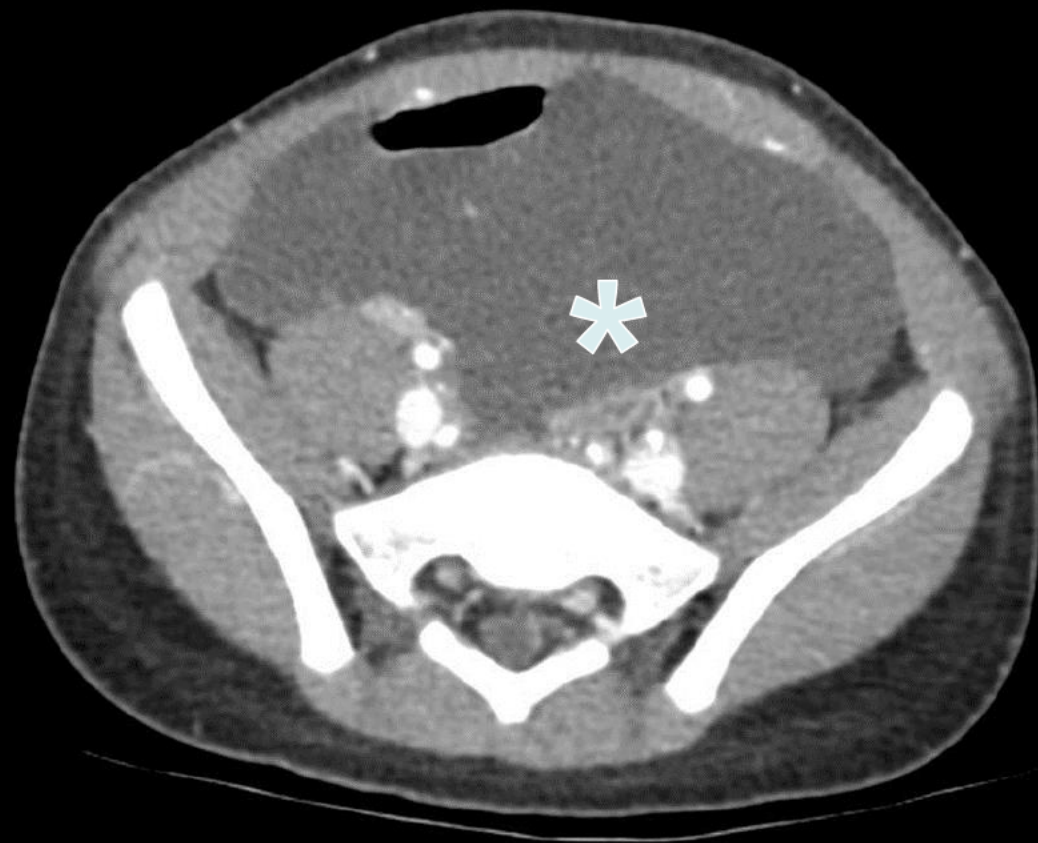
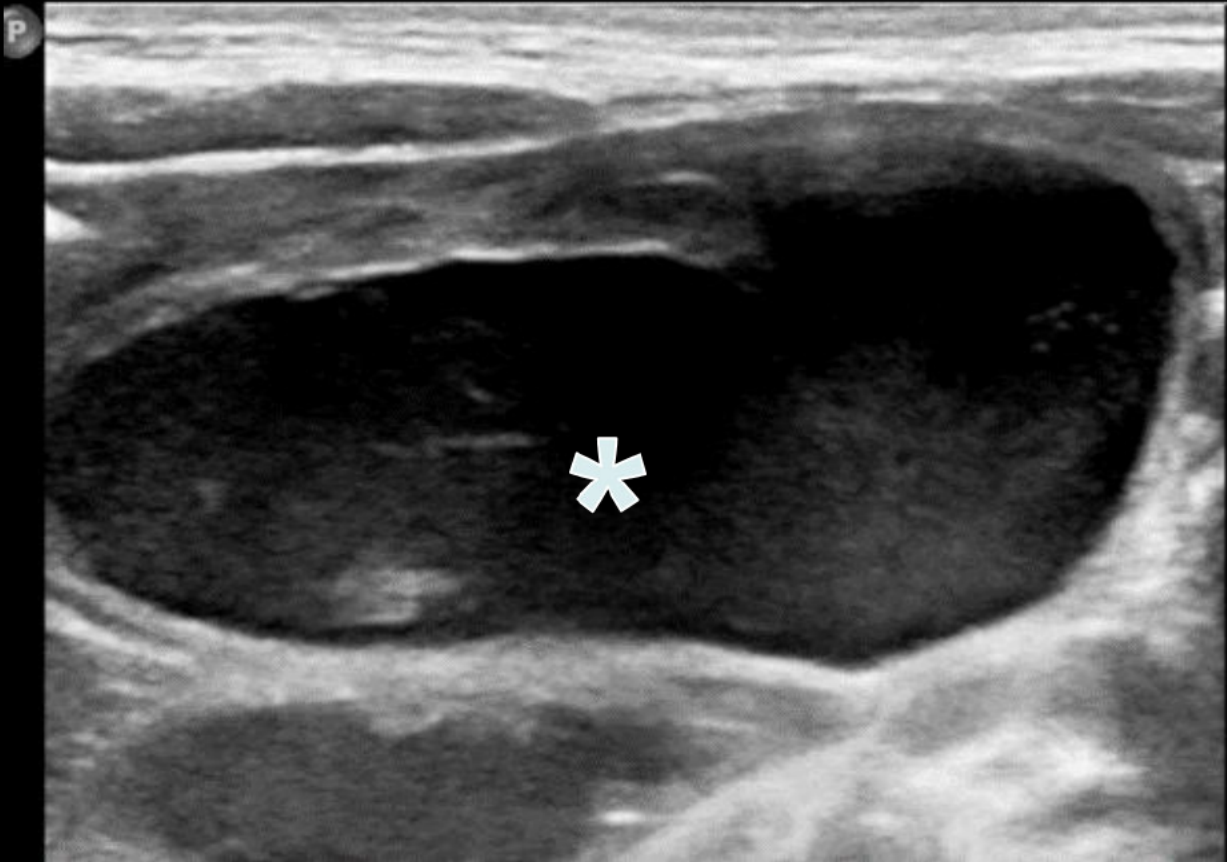
Pediatric Best Case

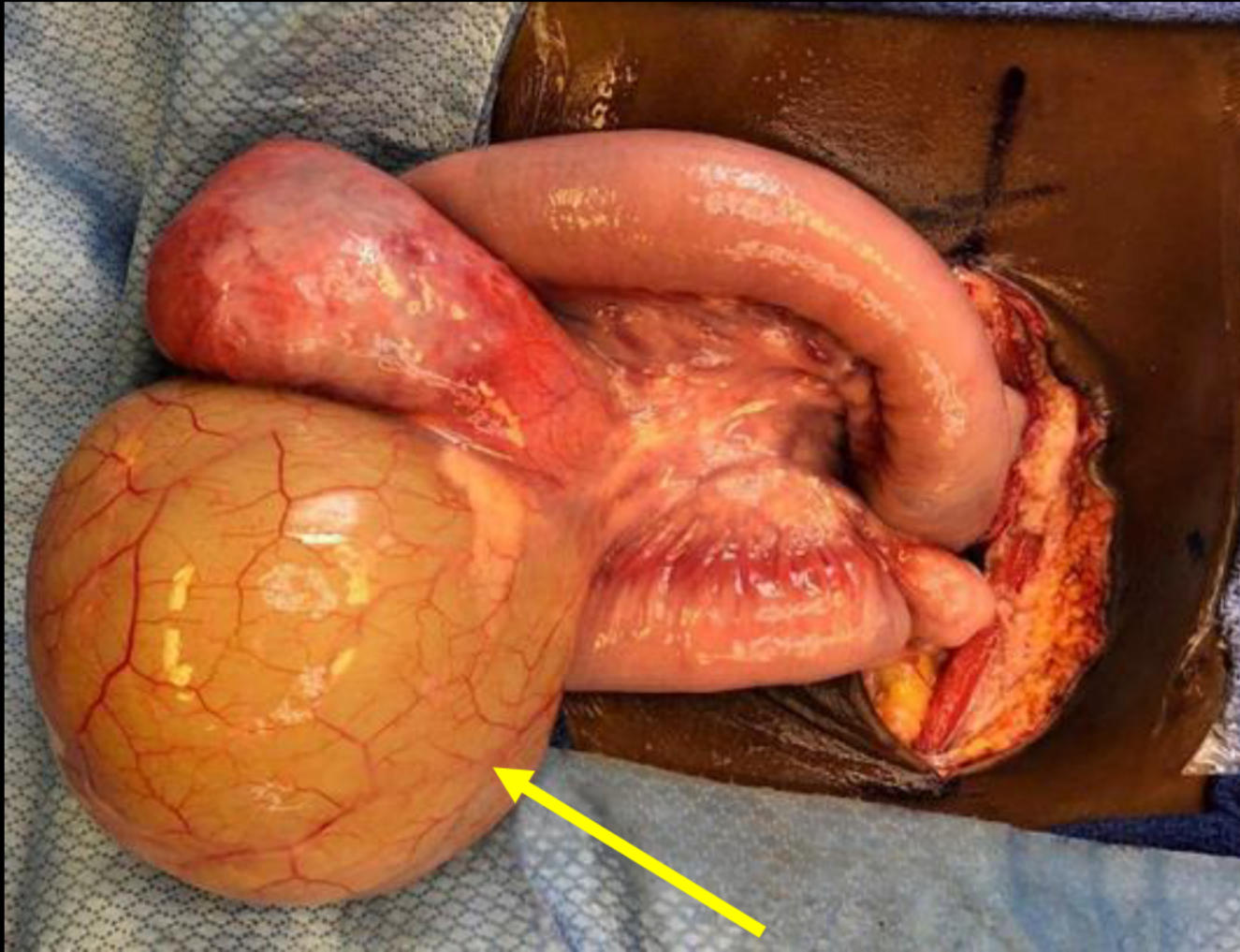


Clinical information

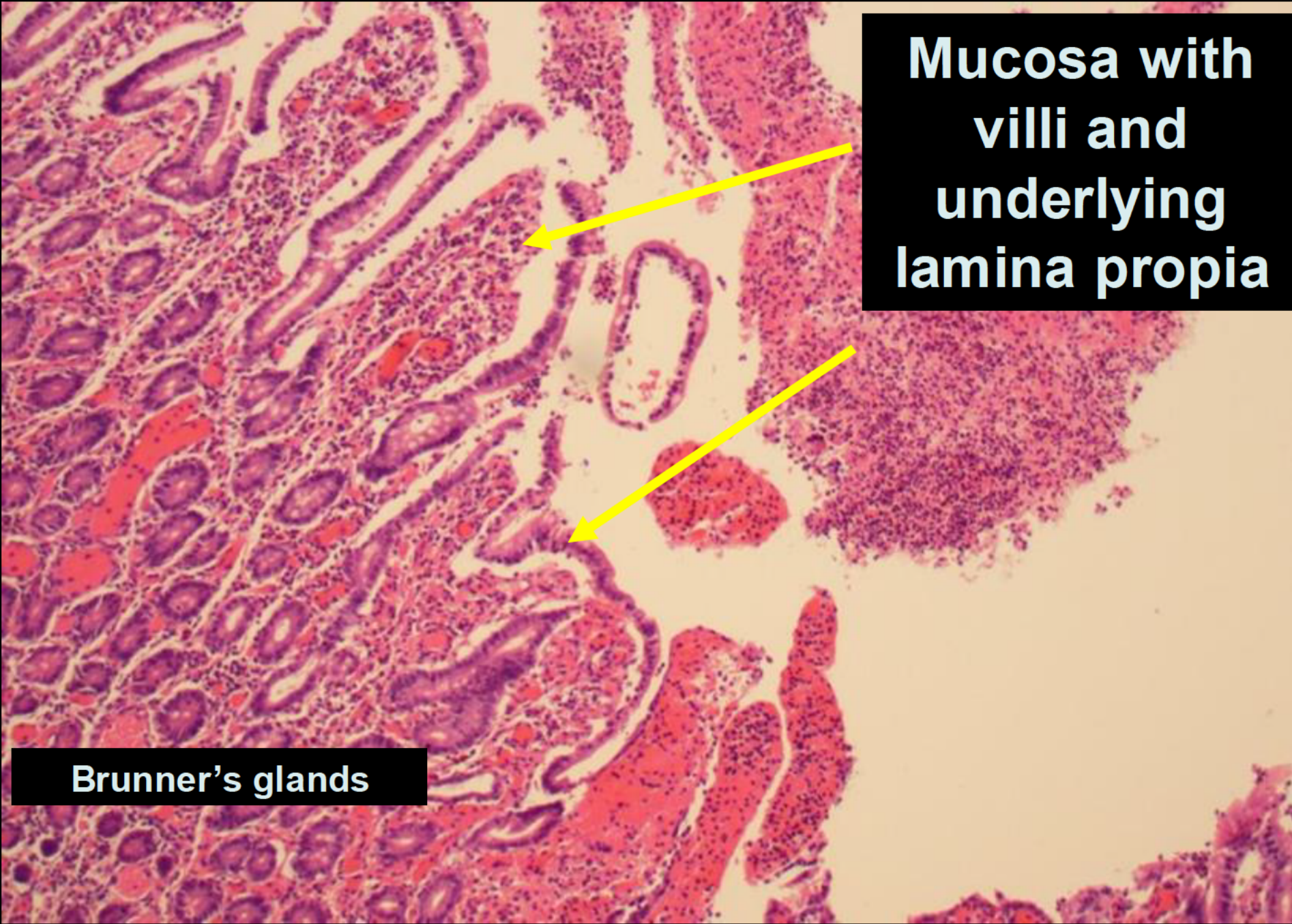
**3-year-old boy who presents with generalized abdominal pain
and multiple episodes of emesis.**

Ultrasound performed to rule out intussusception





**Large cyst
containing
yellow
cloudy fluid**



Mucosa with
villi and
underlying
lamina propria

This histological image shows a cross-section of the stomach's mucosal layer. The surface is covered by numerous finger-like projections called villi. Each villus is lined by a simple columnar epithelium. Beneath the villi is the lamina propria, a layer of loose connective tissue containing small blood vessels and immune cells. In the deeper part of the image, there are Brunner's glands, which are mucous-secreting glands characteristic of the gastric antrum. Two yellow arrows point from the text label to the mucosal layer.

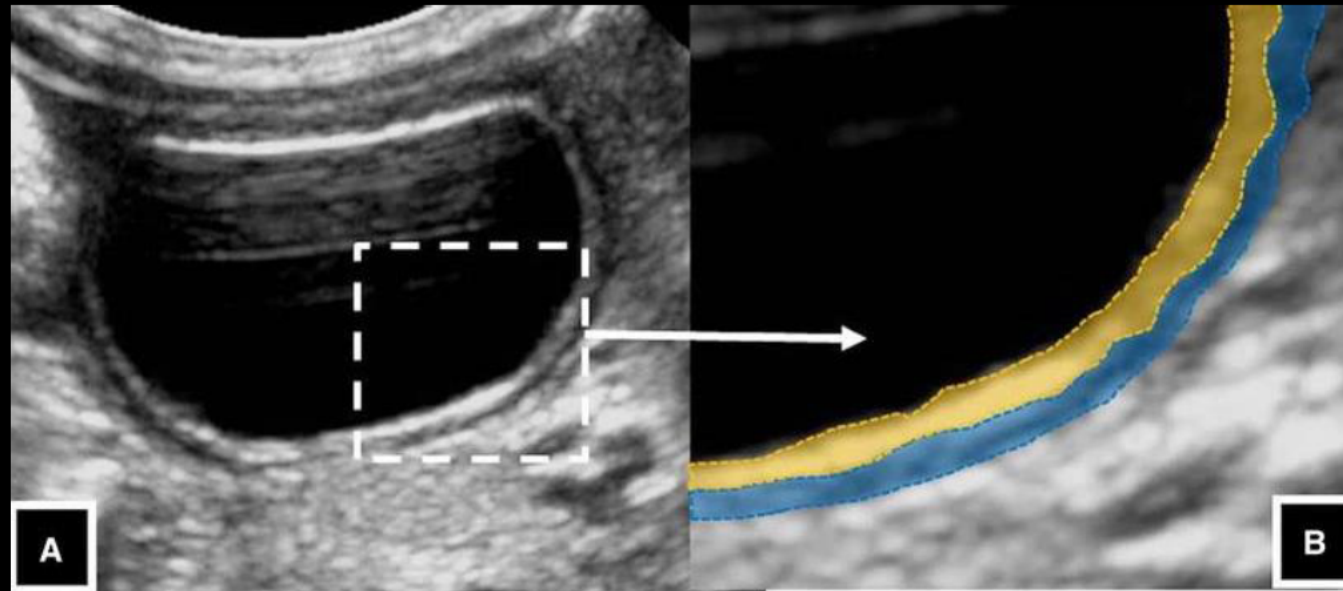
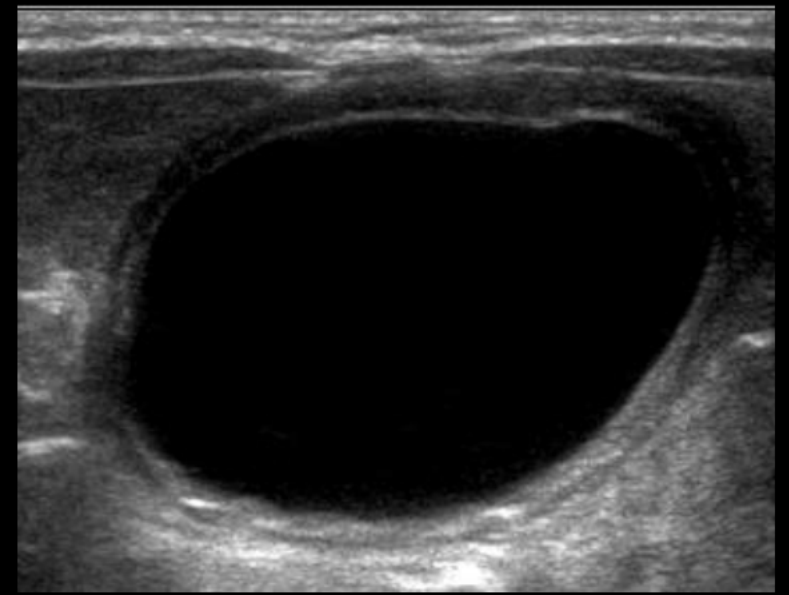
Brunner's glands

AIRP[™]

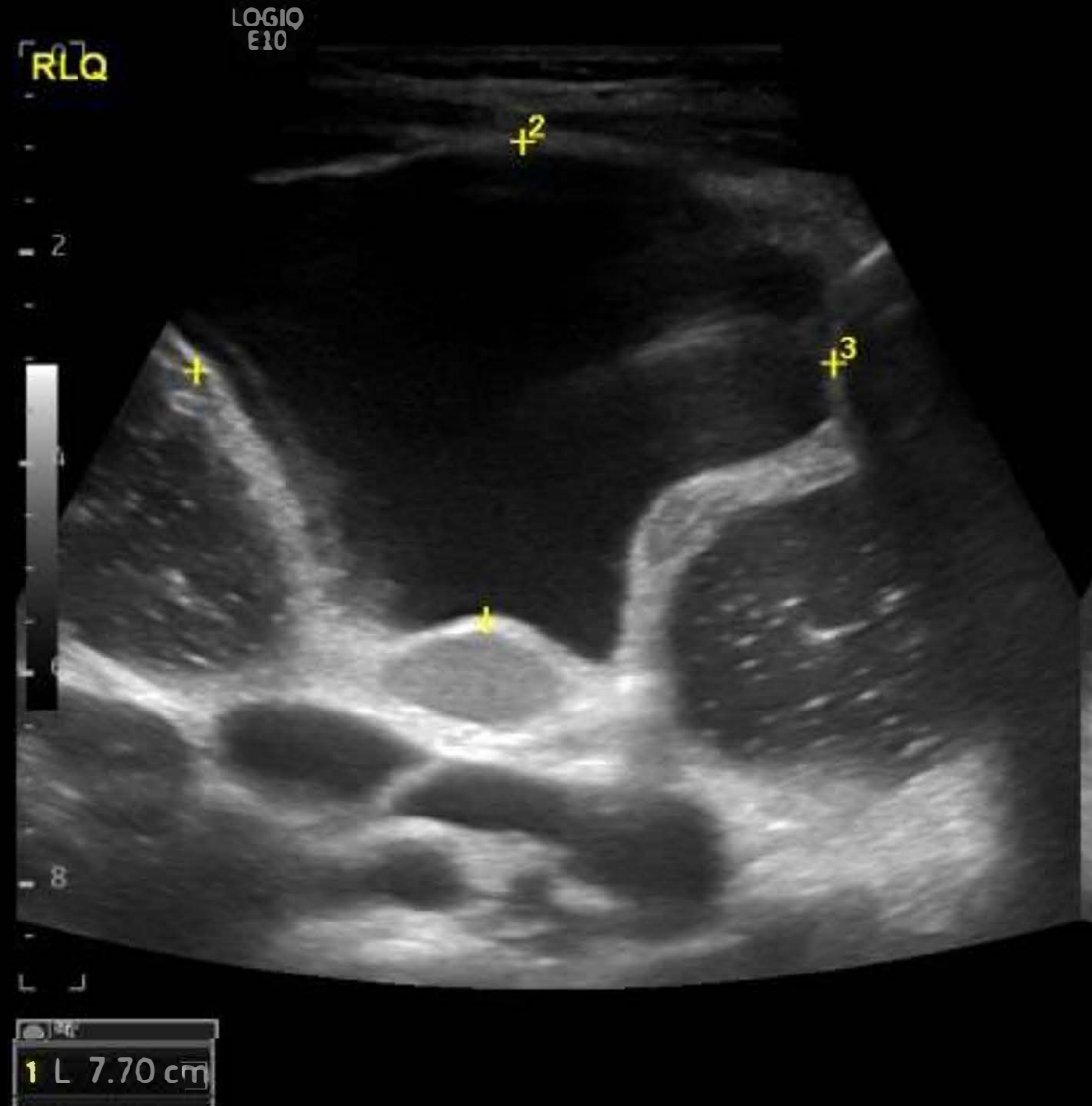
ACR INSTITUTE FOR
RADIOLOGIC PATHOLOGY

Ultrasound

- Preferred study
- “Rim” sign – gut signature in the wall

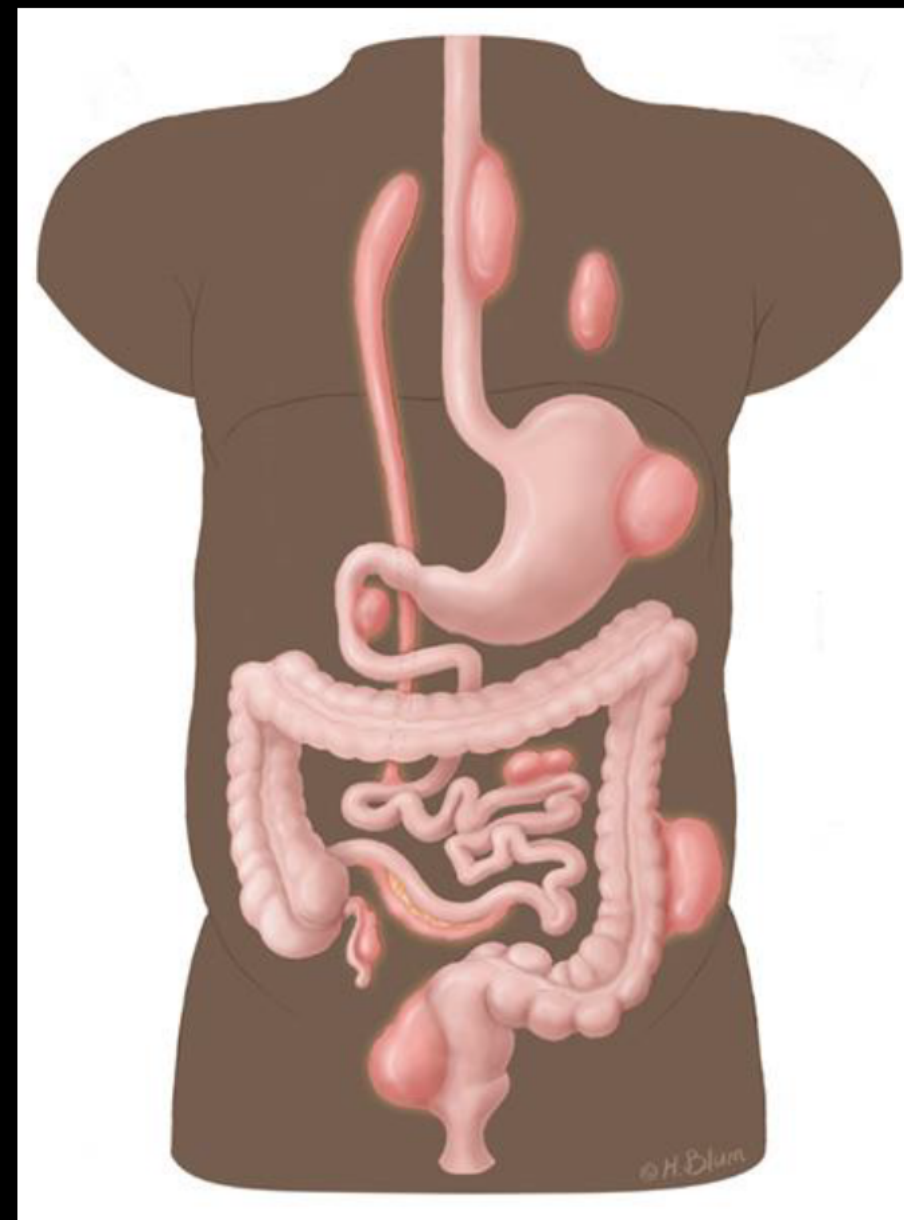


Companion Case: Lymphatic Malformation



Duplication Cyst - Location

- Ileum - 40%
- Thorax - 20
- Jejunum - 10
- Stomach - 10
- Colon - 10
- Multiple - 5



Enteric Duplication Cyst